



HP – PNEUMATICS

System Solutions for Industry

HP Pneumatics

Water- and Special- Fluid Hydraulics

Equipment for Road Safety Training Centres

Fire Fighting Systems for Transformers

Live Line Washing Systems for Insulators

HL-Hydraulik GmbH

Kupferhütte 5C

D-57562 Herdorf

Tel: **+49 (0)2744-9324-0**

web: **www.hl-hydraulik.de**

e-mail: **info@hl-hydraulik.de**

E1 FEB22



HL Hydraulik GmbH

Kupferhütte 5c

57562 Herdorf

Telefon: +49 (0) 27 44-93 24-0

E-Mail: info@hl-hydraulik.de

www.hl-hydraulik.de

HP Pneumatic (Drucklufttechnik)

VDEW empfohlene Druckluftsysteme und Komponenten bis 350 bar

HP Pneumatic

Electrical Industry (VDEW) recommended systems and components up to 350 bar



Wasser- und Sonderhydraulik

Edelstahl-Cartridgeventile und Vorsteuerungen bis 350 bar (800 bar), Nennweiten 2 bis 250 mm Entzunderungsventile, Druck- und Wegeventile, Sprühventile zur partiellen Walzenkühlung.



Water- and Special-Fluid Hydraulics

Stainless steel cartridges and pilot valves up to 350 bar (optional 800 bar), size 2 to 250 mm (08-10 inch).

Descaling valves, directional, check, flow and pressure control functions, spray valves for roll coolant systems.



Technik für Fahrsicherheitszentren

Innovative Technik zur Simulation kritischer Situationen im Straßenverkehr: Schleuderplatten, Fahrbahnbewässerungen, Wasserhindernissysteme

Equipment for Road Safety Training Centers

To simulate critical traffic situations.
Vehicle skidding devices, water film systems, water obstacles

Feuerlöschsysteme für Transformatoren

Fremdenergie-unabhängige Wassersprühsysteme

Fire Fighting Systems for Transformers

Water spraying systems for operation independent from an external power supply

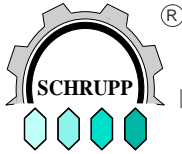


Isolatorenreinigungssysteme

Stationäre Wassersprühsysteme zur Reinigung unter Spannung

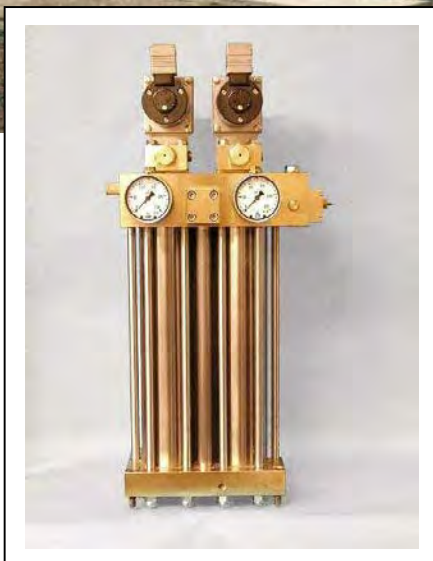
Insulator Cleaning Systems

Water spraying systems for stationary live electrical line cleaning



HP – PNEUMATICS

System Solutions for Industry



HP Pneumatics

Water- and Special- Fluid Hydraulics

Equipment for Road Safety Training Centres

Fire Fighting Systems for Transformers

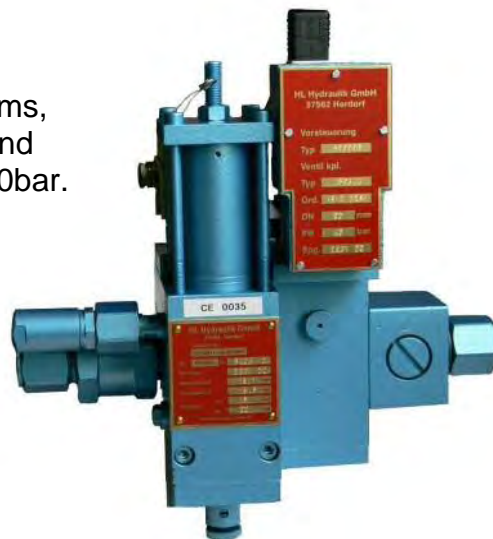
Live Line Washing Systems for Insulators

HP – PNEUMATICS

System Solutions for Industry

Traditional Valves

For high voltage breaker systems, accumulator safety functions and industrial applications up to 350bar.



Valves and Systems

Modular designed components and manifolds in cartridge-technology for industrial applications. Pressures up to 500bar, sizes from 4 to 100mm.

High flexibility, compact design

Reduction of maintenance and interruption time





HP – PNEUMATICS

System Solutions for Industry

Gas Dryer Stations

For laboratories and industrial productions with a need for continuous high quality in the compressed air supply.

For high pressure breathing air in diving and rescue systems.

For high voltage breaker systems to prevent corrosion and icing.

Pressures up to 350bar and dew points below -50°C can be realized.



Compressor Stations

Individual compressor units for in- or outdoor use, complete assembled including necessary valves and electrically control systems.



HP-PNEUMATICS

Traditional Valves



Manual Shut-Off and Check Valves

PN 64 - DN 15, 25

PN 350 - DN 8

Type

HAV 15, HAV 25

HAV 08



Pressure Maintaining and Pressure Maintaining Check Valves

PN 60/350 - DN 16

PN 400 - DN 5

Type

DHV 16/12

DHV 05, DRV 05



Safety Valves

PN 350 - DN 6

PN 40 - DN 30/15

Type

SVE 06

SVE 30/15



Safety Devices

PN 64 – DN 20

PN 200 – DN 10

Type

SHE 06

SHE 20



Pressure Reducing Valves

PN 200 – DN 8

PN 40 – DN20

Type

DMV 08

DMV 20

Systems and Cartridge Technology



Cartridge Program Directional, Sludge Valves

PN 400 – DN 6

PN 250 – DN16

Type

WEV 06

WEV 16



Gas Dryer

PN 350bar

Q 1000L/min /1400L/min

Q 1100-3300L/min

Type

GTR 10, GTR 14

GTF

HAND OPERATED VALVES TYPE HAV

Hand operated valves of the Series HAV provide leakfree operation for high pressure pneumatic or water service. Their robust construction and special adjustable spindle-sealing allow operation under extreme conditions with a very long lifespan. The valves can accept flow in both directions.

Product Range:

NG 8mm PN 350bar

NG 15mm PN 64bar

NG 25mm PN 64bar

Accessories:

Reduction from NG 15 to NG 10 with outside-screw thread M18 x 1.5

Tube fitting connection to Gal. ZN 1201 DIN 50961

Options please find at datasheet DE11.3

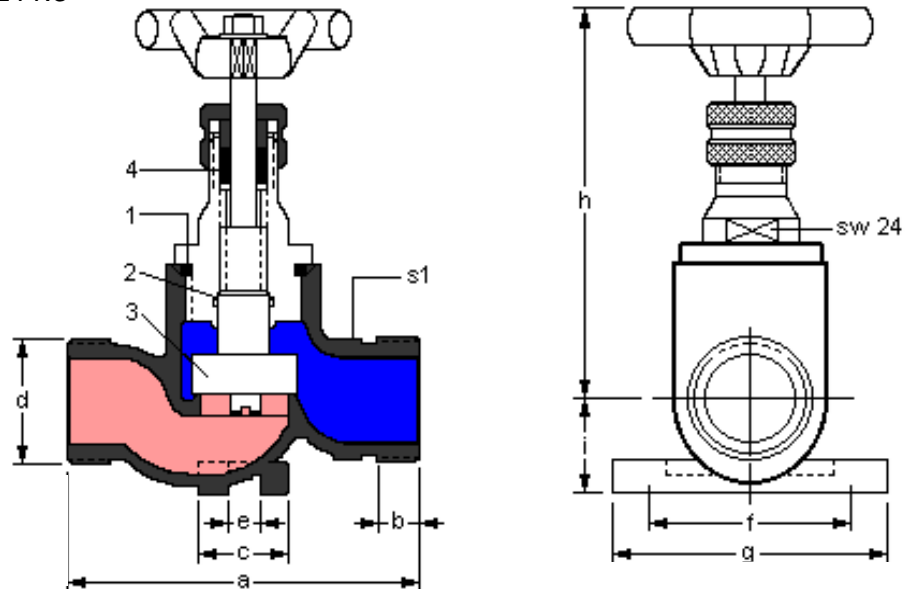


Ordering Information:

HAV15-Productno.

HAV25-Produktno.

= low pressure
 = high pressure



| Type | DN | Productno. | Socket * | Vent | a | b | c | d | e | l | g | h | i | S1 | D Pipe | Mass Kg |
|------|----|------------|----------|------|-----|----|----|---------|---|----|----|-----|----|----|--------|---------|
| HAV | 15 | 160523 | | | 80 | 9 | - | M26x1,5 | - | - | - | 112 | 19 | 24 | 15/18 | 0,55 |
| HAV | 15 | 160525* | X | | 80 | 9 | 17 | M26x1,5 | 8 | 44 | 60 | 112 | 19 | 24 | 15/18 | 0,59 |
| HAV | 15 | 160524 | | X | 80 | 9 | - | M26x1,5 | - | - | - | 112 | 19 | 24 | 15/18 | 0,55 |
| HAV | 15 | 160526* | X | X | 80 | 9 | 17 | M26x1,5 | 8 | 44 | 60 | 112 | 19 | 24 | 15/18 | 0,59 |
| HAV | 25 | 160527 | | | 105 | 12 | - | M36x2 | - | - | - | 113 | 25 | 36 | 25/28 | 0,89 |
| HAV | 25 | 160528 | | X | 105 | 12 | - | M36x2 | - | - | - | 113 | 25 | 36 | 25/28 | 0,89 |

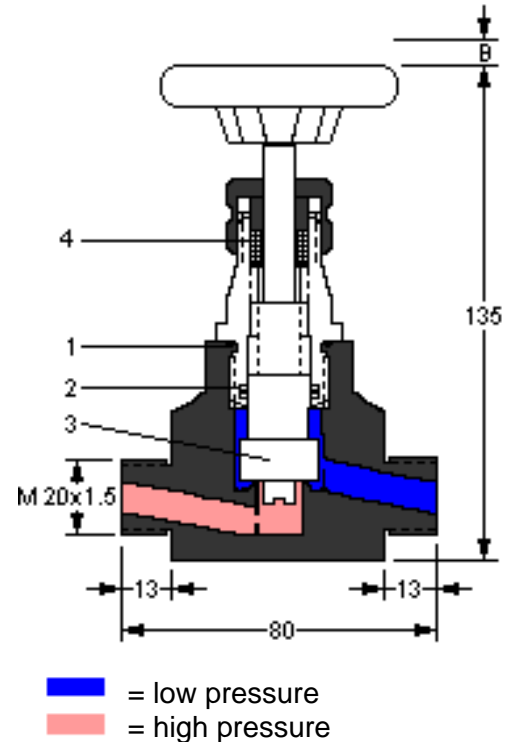
* on request

HAND OPERATED VALVES TYPE HAV

Ordering Information HAV08-504242

ND 8mm PN 350bar

Productno.: 504242



Spare Parts Kit

Consisting of:

| Pos | name |
|-----|----------|
| 1 | O-ring |
| 2 | U-ring |
| 3 | disk |
| 4 | Seal kit |

Ordering Information

HAV15VTS-Productno.-92

HAV25VTS-Productno.-92

HAV08VTS-504242-92

Accessories

HAV 08

Tube fitting connection per
Gal. ZN 1201 DIN 50961 for tube D = 8/10mm
Order no.: **HAV 08 EO**

HAV 15

Tube fitting connection per
Gal. ZN 1201 DIN 50961 for tube D = 15/18mm
Order no.: **HAV 15 EO**

Reduction M26x1,5 to M18x1,5 male thread
Orderno.: **HAV 15 RED10**

HAV 25

Tube fitting connection per
Gal. ZN 1201 DIN 50961 for tube D = 25/28mm
Order no.: **HAV 25 EO**

Options please find at datasheet DE1.1.3

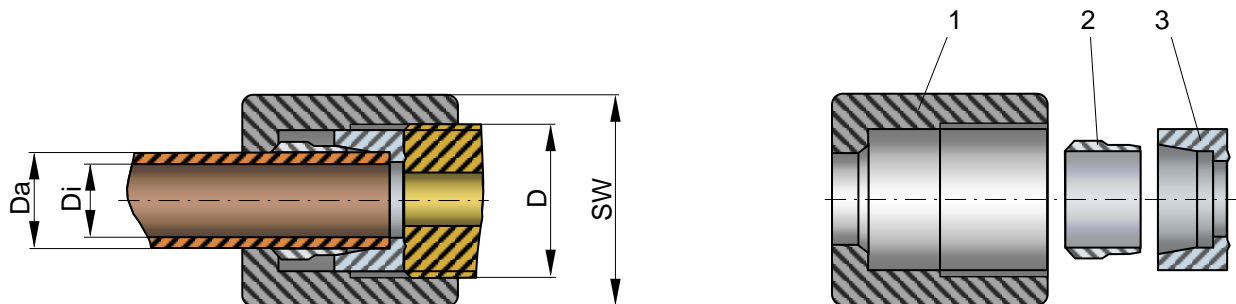
VERSCHRAUBUNGEN FITTINGS

Stoßverschraubungen erleichtern den Aus- und Einbau von Ventilen in Rohrleitungen. Nach dem Lösen der Überwurfmutter können die Ventile aus dem Rohrleitungssystem herausgenommen werden ohne die vorhandenen Leitungen zu demontieren. Die Verschraubungen werden aus St A3C gefertigt und können für Ventile des Typs HAV, RSV, DHV, DHR und DRV verwendet werden.

Serienmäßig werden unsere Ventile mit den jeweiligen Standard Stoßverschraubungen gemäß Datenblatt ausgeliefert. Darüber hinaus können aber auch Sonderverschraubungen für andere Rohrdurchmesser geliefert werden.

The use of breakaway fittings allows an easy assembling and de assembling of valves in an piping system. After unscrewing the Nuts it is possible to move the valve out of the piping system without deinstalation of any pipes. All parts are produced from galvanized steel St A3C and will be used at valves type HAV, RSV, DHV, DHR and DRV.

Our valves include standard breakaway fittings according to the individual datasheets. Optional it is possible to order fittings for other pipe diameters.



| Stoßverschraubungen / Breakaway Fittings | | | | | | | | |
|--|--|--|-----------|-----------|--|---------|---------|---------|
| Type | 12 | 10 | 12 | 15 | 18 | 22 | 25 | 28 |
| Teilenr. / Partsno. | 852525 | 852508 | 852505 | 852502 | 852526 | 852511 | 852513 | 852527 |
| Druck / Pressure | 400bar | 400bar | 400bar | 100bar | 100bar | 100bar | 250bar | 100bar |
| Da | 12mm | 10mm | 12mm | 15mm | 18mm | 22mm | 25mm | 28mm |
| Di | 8mm | 7,5mm | 9,5mm | 12,5mm | 15mm | 19,5mm | 21,5mm | 25mm |
| D | M20 x 1,5 | M26 x 1,5 | M26 x 1,5 | M26 x 1,5 | M26 x 1,5 | M36 x 2 | M36 x 2 | M36 x 2 |
| SW | 24mm | 32mm | 32mm | 32mm | 32mm | 41mm | 46mm | 41mm |
| 1. Mutter / Nut | 080786 | 852510 | 852507 | 852504 | 080788 | 852512 | 505896 | 080790 |
| 2. Schneidring / Cut Ring | 080794 | 080793 | 080794 | 163574 | 080795 | 080797 | 505897 | 080798 |
| 3. Druckring / Pressure Ring | 080801 | 852509 | 852506 | 852503 | 080802 | 850267 | 851500 | 080805 |
| Einsetzbar für Teilenummer (Datenblatt) | 504242 (D/E1.1.2) | 160523 (D/E1.1.1) 160524 (D/E1.1.1) | | | 160527 (D/E1.1.1) 160528 (D/E1.1.1) | | | |
| Usable for Partno. (Datasheet) | 159423 (D/E1.2) | 60535 (D/E1.2) | | | 160537 (D/E1.2) | | | |
| | 504270 (D/E1.3.1) 450050 (D/E1.3.1) | 160540 (D/E1.3.5) | | | 159784 (D/E1.2) 451263 (D/E1.3.1) | | | |
| | 851714 851716 (D/E1.3.6) | | | | | | | |

NON RETURN VALVES TYPE RSV

PN 64

DN 15 und DN 25

Includes EO tube fittings

Gal. ZN 1201 DIN 50961

Options please find at datasheet DE1.1.3

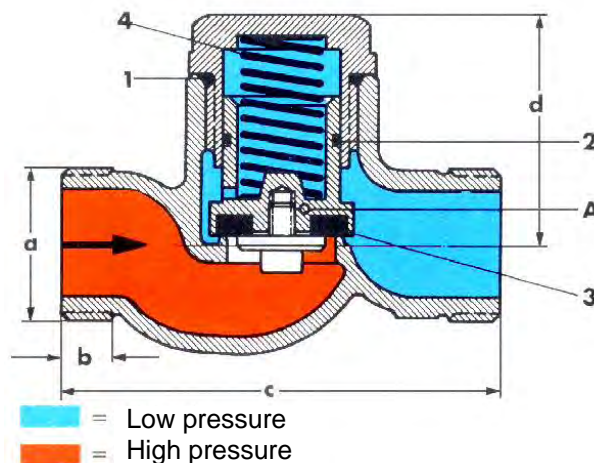


| DN | Seat | a | b | c | d | Mass Kg | Partno. |
|----|------|-----------|----|-----|----|---------|---------|
| 15 | soft | M26 x 1,5 | 9 | 80 | 60 | 0,4 | 160535 |
| 25 | soft | M36 x 2 | 12 | 105 | 58 | 0,5 | 160537 |

Ordering Information

RSV-Productno.

Opening pressure 2bar



PN 100

DN 16 und DN 25

Includes EO tube fittings

Gal. ZN 1201 DIN 50961

Options please find at datasheet DE1.1.3

| DN | Thread connection | length | Partno. |
|----|-------------------|--------|---------|
| 10 | M 20 x 1,5/PN200 | 80 | 195423 |
| 25 | M 36 x 2/PN100 | 85 | 159784 |

Ordering Information

RSV-Productno.



PRESSURE MAINTAINING VALVES TYPE DHV, DRV

Pressure Maintaining and Pressure Maintaining Check Valves series DHV and DRV are mounted between the condenser and the compressed air vessel. These valves maintain a constant pressure at the condenser and help to facilitate water separation from the air.

The higher the pressure at the valve, the better the water-separation.

Their robust construction allows their use under extreme conditions with a very long lifespan.



Ordering Information Pressure Maintaining Valves

DHV16-35-451263 ND16mm PN 15-60bar

DHV12-330-451262 ND12mm PN 30-350bar

DHV05-350-504270 ND 5mm PN 60-350bar

DHV05-66-504270-02 ND 5mm PN 15-70bar

DHV05-395-504270-04 ND 5mm PN 300-400bar

Ordering Information Pressure Maintaining Check Valves

DRV05-345-450050 ND 5mm PN 60-350bar

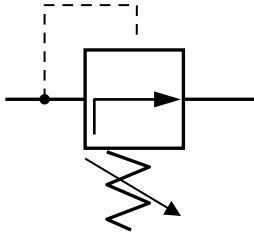
DRV05-69-450050-02 ND 5mm PN 15-70bar

└ Adjusted set pressure with delivery [bar]



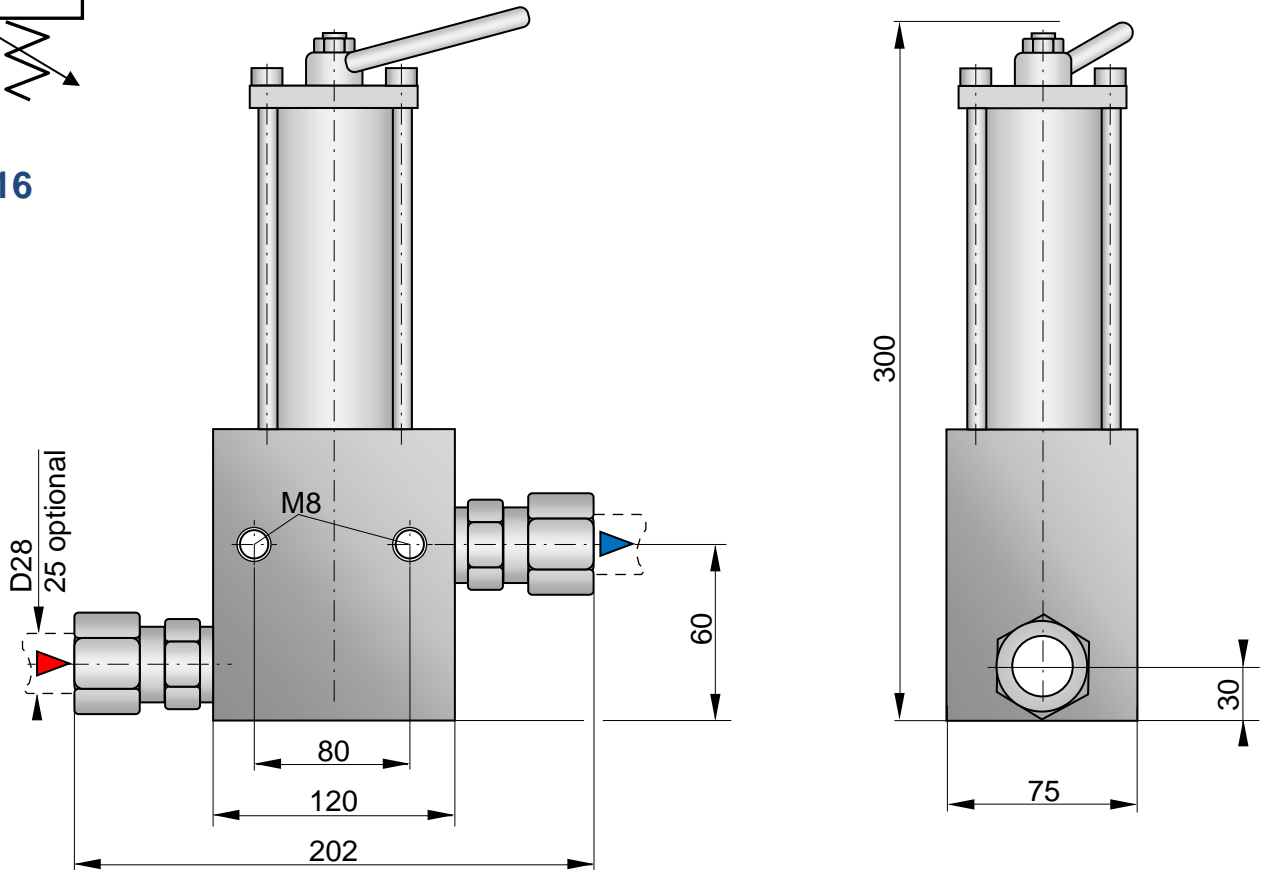
| Technical Data | DHV 05 | DRV 05 | DHV 12 | DHV 16 | |
|--|--------|--------|--------|--------|-------|
| Flow rate with 5bar dp | - | - | 750 | 1500 | l/min |
| with 10bar dp | 160 | 160 | 2500 | 5000 | l/min |
| with 15bar dp | - | - | 4600 | 9200 | l/min |
| with 220bar dp | 3500 | 3500 | - | - | l/min |
| Minimum pressure difference | 10 | 10 | 5 | 5 | bar |
| Max. operating pressure | 350 | 350 | 350 | 60 | bar |
| Pressure range | 15-350 | 15-350 | 30-350 | 15-60 | bar |
| Mass | 1 | 1,8 | 12 | 12 | Kg |
| Housing material | MS | MS | MS | MS | |
| Seals | Buna-N | Buna-N | Buna-N | Buna-N | |
| Tube-connection size | 12 | 12 | 20 | 28 | mm |
| Options please find at datasheet DE1.1.3 | | | | | |

PRESSURE MAINTAINING VALVES TYPE DHV, DRV

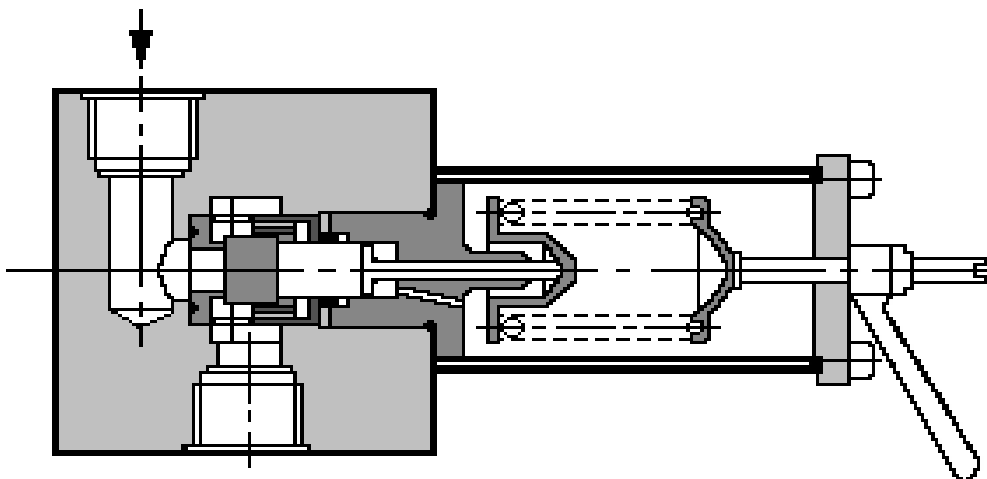


Opening Pressure Adjustment

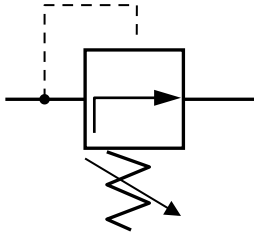
DHV16



Order no. Seal Kit: DHV16VTS-451263-92

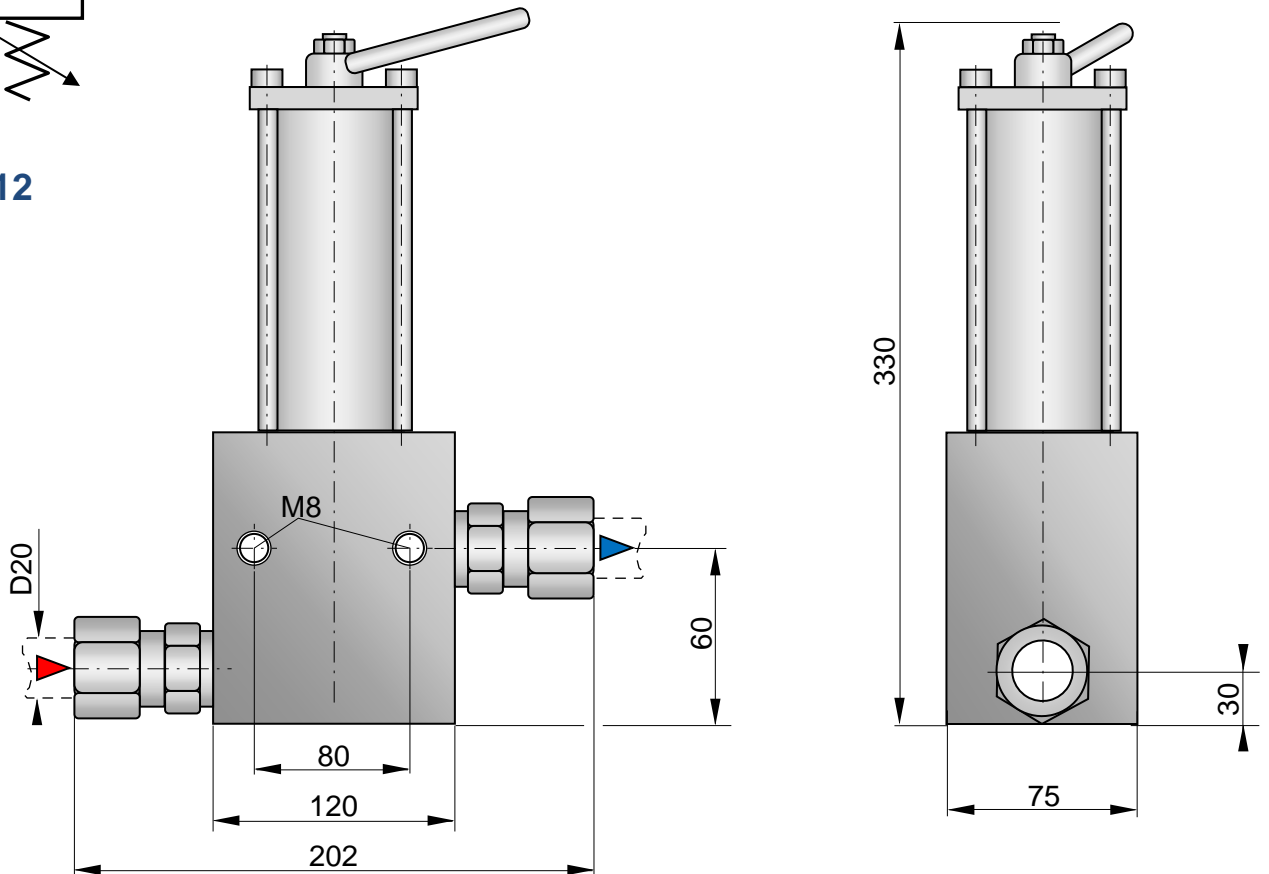


PRESSURE MAINTAINING VALVES TYPE DHV, DRV

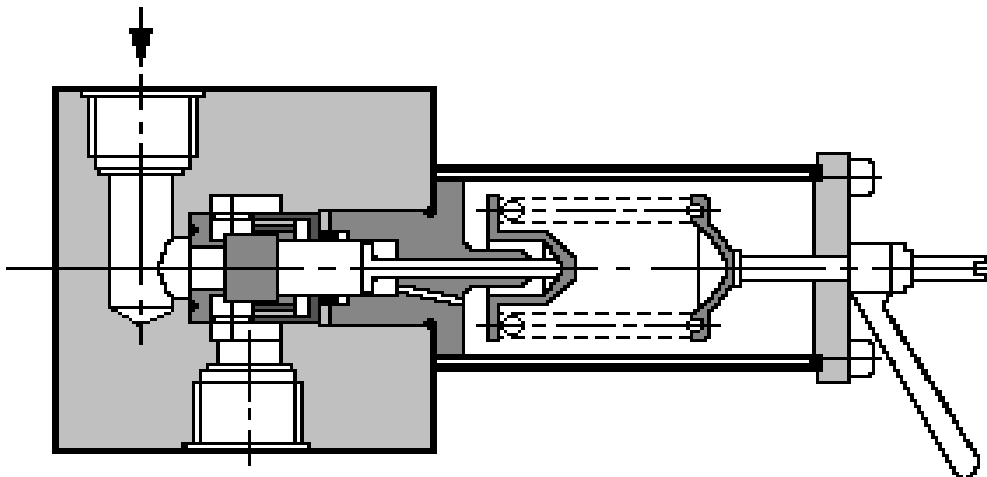


Opening Pressure Adjustment

DHV12

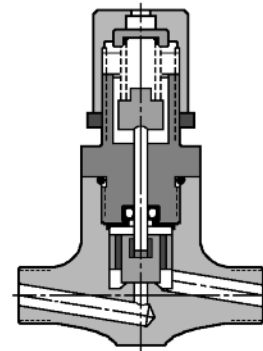
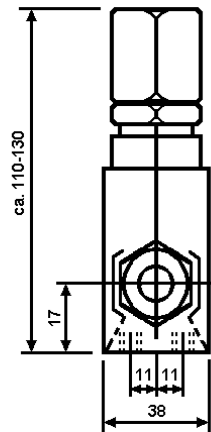
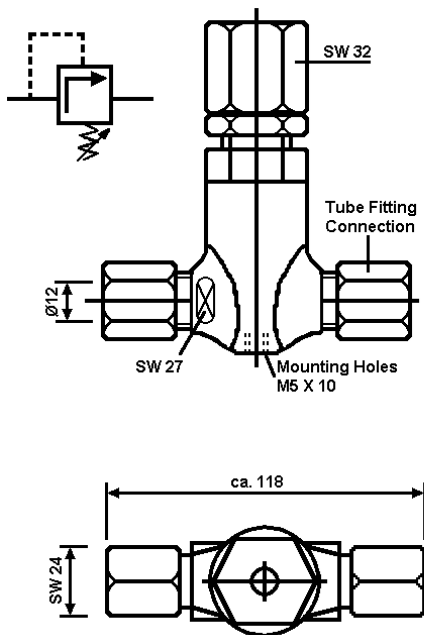


Order no. Seal Kit: DHV12VTS-451262-92



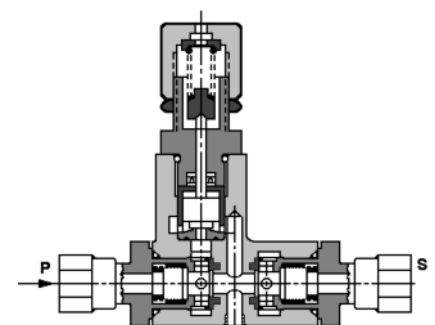
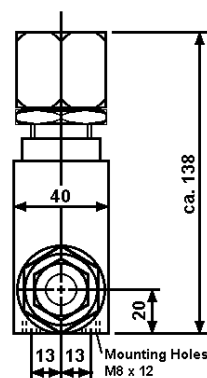
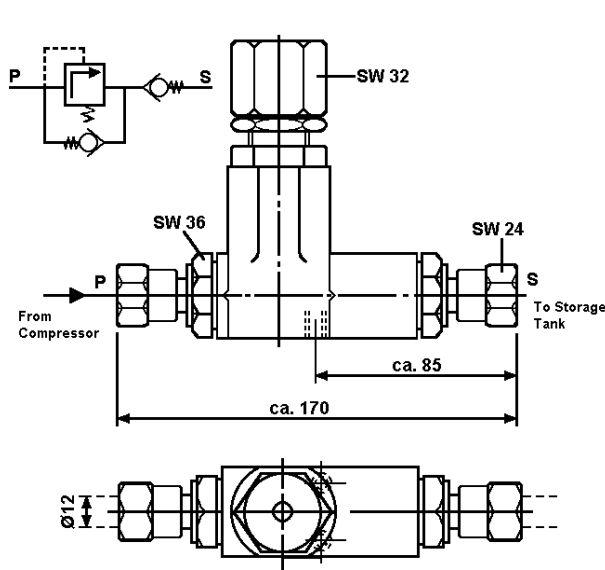
PRESSURE MAINTAINING VALVES TYPE DHV, DRV

DHV 05



Ordering Information
Spare Parts Kit:
DHV05VTS-504270-92

DRV 05

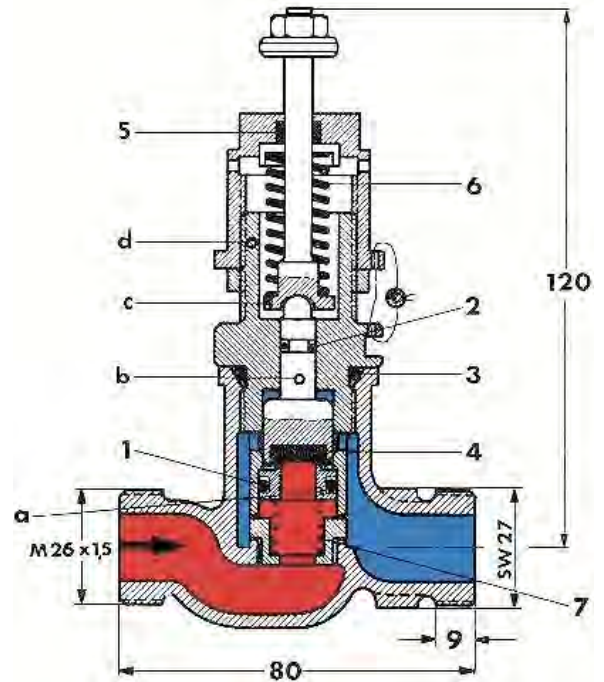


Ordering Information
Spare Parts Kit:
DRV05VTS-450050-92

PRESSURE MAINTAINING VALVES TYPE DHV, DRV

Pressure Maintaining Valves are mounted between the condenser and the compressed air vessel. These valves maintain a constant pressure at the condenser and help to facilitate water separation from the air.

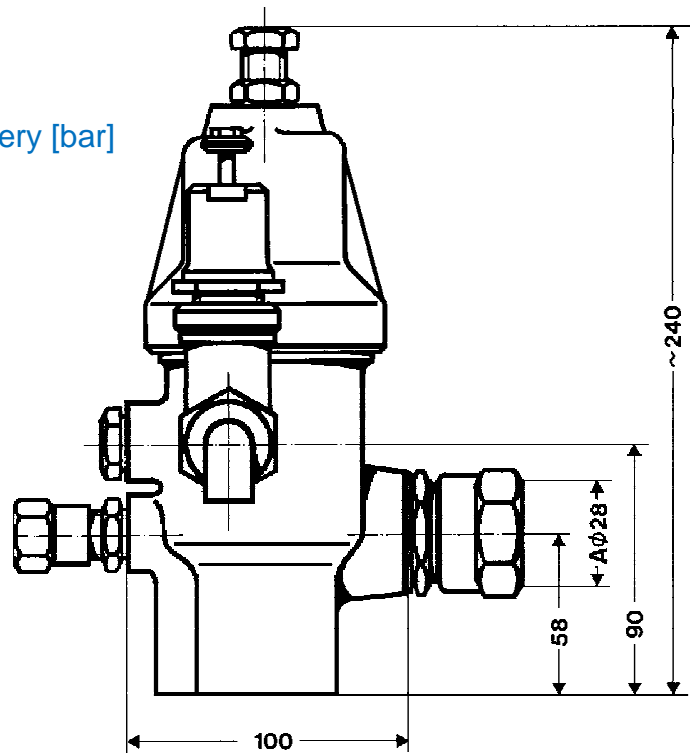
The higher the pressure at the valve, the better the water-separation.
Pressure Maintaining Valve includes EO fittings Gal. Zn 1201 DIN 50961
Options please find at datasheet DE1.1.3

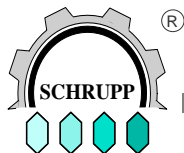


Mass 5kg
Max operating pressure 45 bar
Soft seat
Ordering code: DHV08-12-160540

Adjusted set pressure with delivery [bar]

Example:
Valve combination DMV 08 and DHV 06. This combination can be used to reduce a pressure in a system and to protect the secondary circuit against overpressure.





PRESSURE MAINTAINING VALVES TYPE DHV, DRV

Pressure Maintaining Check Valves Type DHR05 include an Pressure Maintaining Valve Type DHV05 and an check valve. This combination is an economical option to individual piped valves. DHR valves are available with different ports so that they can be easily adapted to existing systems.

Pressure Maintaining Check Valves series DHR are mounted between the condenser and the compressed air vessel. These valves maintain a constant pressure at the condenser and help to facilitate water separation from the air.

As higher the pressure at the valve is, as better the water-separation. Their robust construction allows their use under extreme conditions with a very long lifespan.



Ordering Information

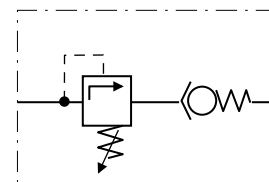
- DHR05-280-851714** Pressure Maintaining Check Valve with connections for pipes outside dia 12mm (Options please find at datasheet DE1.1.3)
- DHR05-320-851741-01** DHR, Inlet: for pipe outside dia 12mm, Outlet: G 3/8" female port
- RSV05-350-851716** Check Valve inlet: DHV connection port, outlet: for pipe outside dia 12mm (Options please find at datasheet DE1.1.3)
- RSV05-185-851716-01** Check Valve inlet: DHV connection port, outlet: G 3/8" female port
└ Adjusted set pressure with delivery [bar]

Technical Data

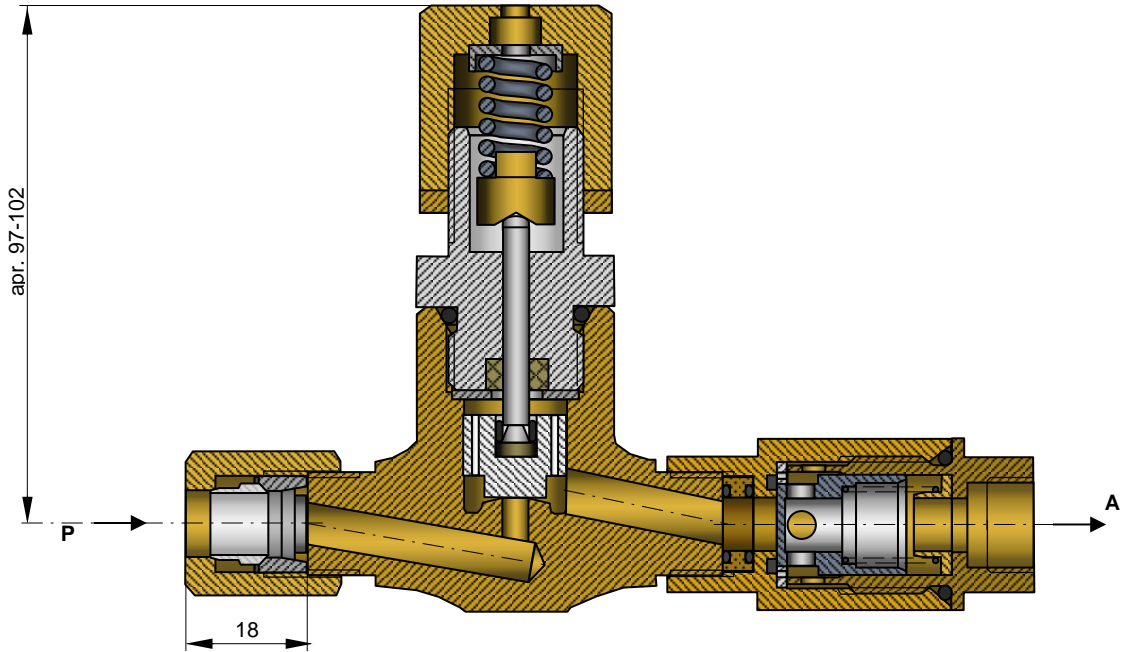
DHR 05

| | | |
|-------------------------|-----------|-------------------|
| Flow rate at 10 bar dp | 160 | l/min |
| at 220bar dp | 3500 | l/min |
| Medium | compr.air | others on request |
| Min pressure drop | 10 | bar |
| Max. operating pressure | 350 | bar |
| Adjustment | 15-350 | bar |
| Mass | 15 | N |
| Housing material | MS | |
| Seals | Buna-N | |

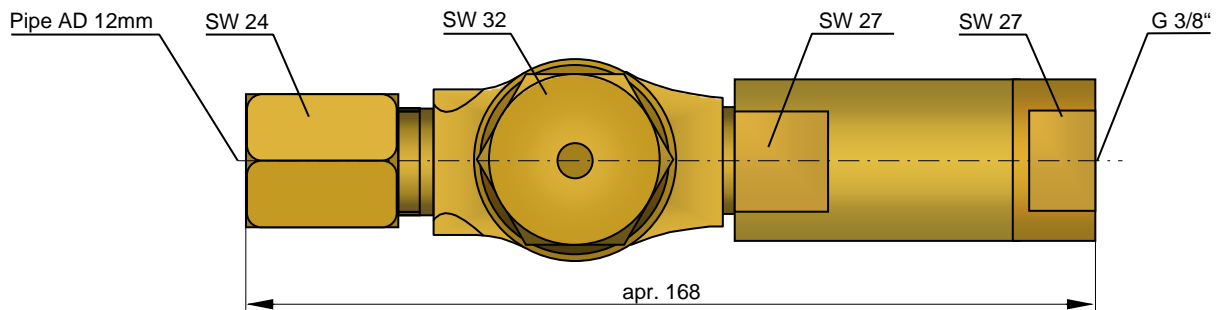
Functional Diagram



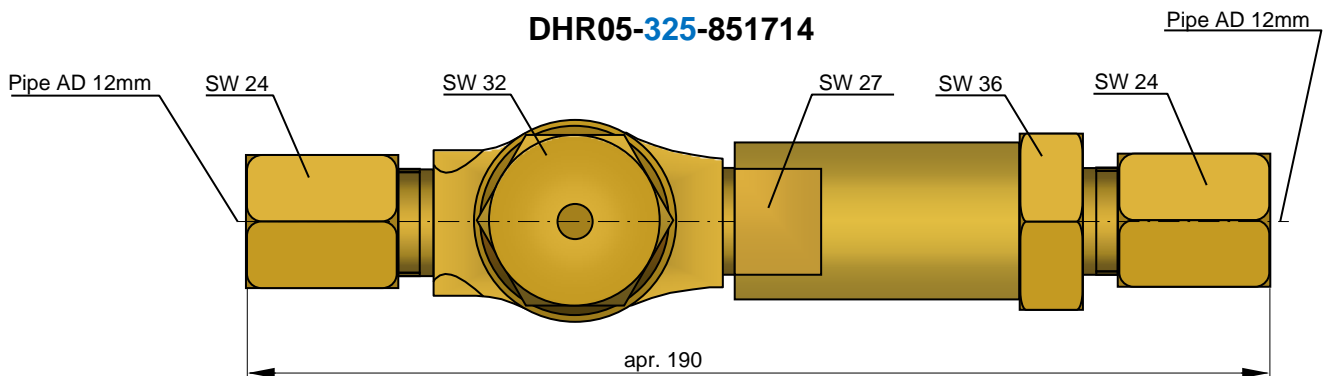
PRESSURE MAINTAINING VALVES TYPE DHV, DRV



DHR05-340-851714-01



DHR05-325-851714



Adjusted set pressure with delivery [bar]

SAFETY VALVES TYPE SVE 06**SAFETY VALVE TYPE V600
ORDERING NO SVE 06 - 087202**

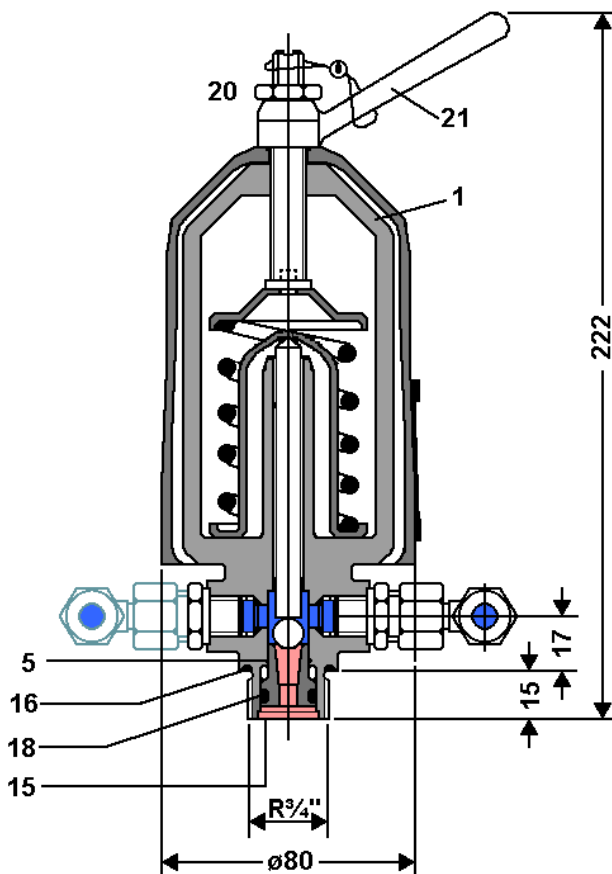
Application: Schrupp safety valves type SV06-1 and SV06-2 are spring loaded valves designed to protect compressors from over-pressurization.

Schrupp proportional safety valves can also be used to protect pressure vessels containing non-poisonous gases.

- Special characteristics:** TUV approval up to 350 bar
Acc. to 214/68/EC gases Group 2, Category IV, Certificate according to Modul B (TÜV)
Low hysteresis and good operational control even under adverse conditions.
Compact dimensions
Robust design
Easy to maintain
- Technical Data:** Size: DN6
Operating Pressure: 55 -350bar
Flow rate in L/min: 32.2 x p(bar)
Ambient Temperature: 0-70 degrees C.
Manufactured according to AD specification no. A2 for proportional safety valves.
- Notice:** Valves are shipped with plugged ports. Please remove before installation

SAFETY VALVES TYPE SVE 06

■ = Primärdruck
■ = Sekundärdruck



Functional Description:

Port R is connected to the compressor or high pressure vessel. In the event of over-pressure, the ball lifts from the seat and bleeds pressure through the side outlet port. The elbow fittings can be arranged to send the air in any direction. To check valve function, turn lever #21 counter-clockwise to valve housing, #1. This test will not affect the pressure set point.

The set pressure can be adjusted by turning lever #21 after loosening locking nut #20. (Turn clockwise to increase pressure set point.) After adjustment, re-tighten locking nut #20. The valves do not require regular servicing. Periodically, tests are required. according to 2014/68/EC.

The valve can be ordered for different pressure adjustment ranges

| | | |
|----------------|------------------|--------------|
| SVE06 - 087201 | adjust. pressure | 55 - 66bar |
| SVE06 - 087199 | adjust. pressure | 66,1- 85bar |
| SVE06 - 087202 | adjust. pressure | 85,1-110bar |
| SVE06 - 087200 | adjust. pressure | 110,1-135bar |
| SVE06 - 087400 | adjust. pressure | 135,1-150bar |
| SVE06 - 087204 | adjust. pressure | 150,1-175bar |
| SVE06 - 087203 | adjust. pressure | 175,1-220bar |
| SVE06 - 160253 | adjust. pressure | 220,1-250bar |
| SVE06 - 087975 | adjust. pressure | 250,1-350bar |

Ordering Information

SVE 06 - **345** - **087957**

Type

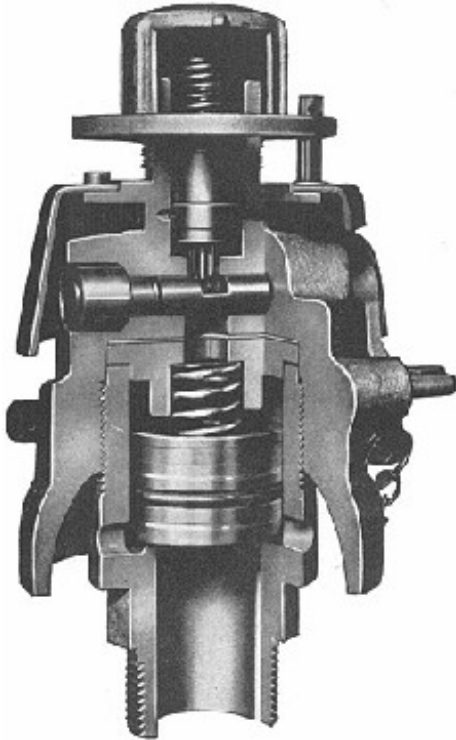
Set Pressure [bar]

Productno.

Ordering Information seal kit:

Part no.: **SVE 06 VTS - 087400**

- Item 5 Seat
- Item 15 O-Ring
- Item 16 O-Ring
- Item 18 Back Ring

SAFETY VALVES TYPE SVE 30 (POP OFF)

Safety Valves Type S650:
Ordering no. SVE 30

Application: The Schrupp SV30 safety valve is a spring loaded valve used to protect vessels containing non-toxic gases from over-pressurization. Upon reaching the set pressure, the valve opens fully and immediately.

Special Features:

TUV approval up to 44 bar acc. to 2014/68/EU gases Group 2, Category IV, Certificate according to Modul B (TÜV),

Low hysteresis and good operational control even under adverse conditions.

Compact dimensions

Robust design

Easy to maintain

Technical Data:

Nominal Size: DN 30 mm

Set pressure from 4.5 to 44 bar

Flow rate: 4750 x p in liter/min

Mass: approximately 3.2 kg

Ordering Information
SVE30 - 36 - 156148

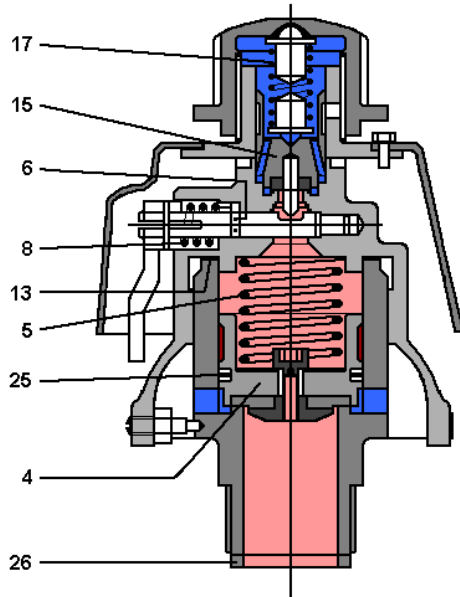
 Adjusted Set
 Pressure
 [bar]

Ordering Information Seal Kit:
SVE30 VTS - 156148 - 92

Pressure Range[bar] / Productno.

| | |
|-----------|--------|
| 4,5 - 6 | 089049 |
| 6,1 - 8 | 089060 |
| 8,1 - 13 | 089061 |
| 13,1 - 16 | 089062 |
| 16,1 - 21 | 089063 |
| 21,1 - 25 | 089064 |
| 25,1 - 35 | 089065 |
| 35,1 - 44 | 156148 |

SAFETY VALVES TYPE SVE 30 (POP OFF)



■ = Primary Pressure
■ = Relieved Pressure

Maintenance and Operation:

1. Shipping and Storage

During transportation or storage, the valve should be locked in the open position by use of the manual handle. All ports must be plugged. To open the valve, the lever should be moved against the spring force to the end position and fixed by the holding clamp.

2. Installation

On pressure vessels or pipes with minimum inside diameter of 1 inch. For installation, use only original seals; never use glue or other additional seal materials.

3. Adjustment of Set Pressure

After removing the pin the set pressure can be changed, by turning the thread cap clockwise (increases set pressure) or counter-clockwise (reduces set pressure).

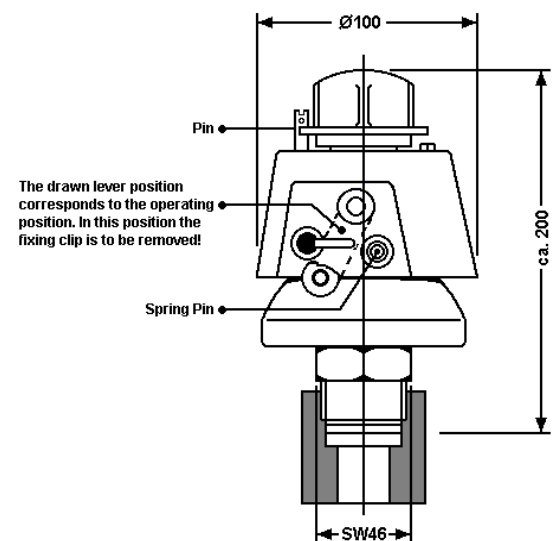
4. Noise protection

Because of the possible production of high noise levels, we recommend the use of an ear protection.

Mode of operation:

Closin With increasing pressure the valve insert (15) rises out of its seat and vents air to atmosphere. Then the piston (4) rises out of its seat and the valve opens.

Open: After blowing the pressure off over the piston (4) the valve insert (15) closes fast; the closing process of the piston (4) is delayed until the pressure build-up over the piston (4) escapes through the drilling in the piston. Thus, closing of the piston (4) takes place not via the strength of the spring (5), but with the pressure on the differential area of the piston (4) opposite the valve seat.



Technical data subject to change

SAFETY VALVES TYPE SVE 10



TÜV approved Safety Valve for compressed air.

2014/68/EU, Group2, Category IV

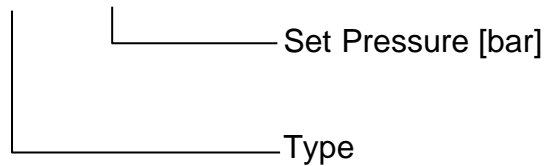
Set Pressure: 0,3 – 50 bar

Operating Temperature: max 180°C

DN 10mm

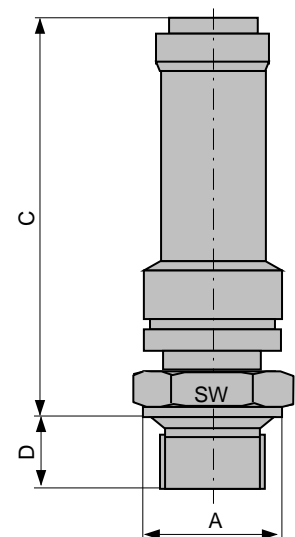
Ordering Information

SVE10 - 45 – Part no.



| Part no. | Connection | Pressure | SW | A | C | D |
|----------|------------|---------------|----|----|-----|----|
| 850803 | G3/8" | 0,3 – 8,5 bar | 27 | 22 | 75 | 12 |
| 850803 | | 8,6 – 40 bar | 27 | 22 | 95 | 12 |
| 850803 | | 40,1– 50 bar | 27 | 22 | 120 | 12 |
| 850804 | G1/2" | 0,3 – 8,5 bar | 27 | 26 | 75 | 14 |
| 850804 | | 8,6 – 40 bar | 27 | 26 | 95 | 14 |
| 850804 | | 40,1– 50 bar | 27 | 26 | 120 | 14 |
| 850805 | G3/4" | 0,3 – 8,5 bar | 32 | 32 | 75 | 16 |
| 850805 | | 8,6 – 40 bar | 32 | 32 | 95 | 16 |
| 850805 | | 40,1– 50 bar | 32 | 32 | 120 | 16 |

Dimensions in mm

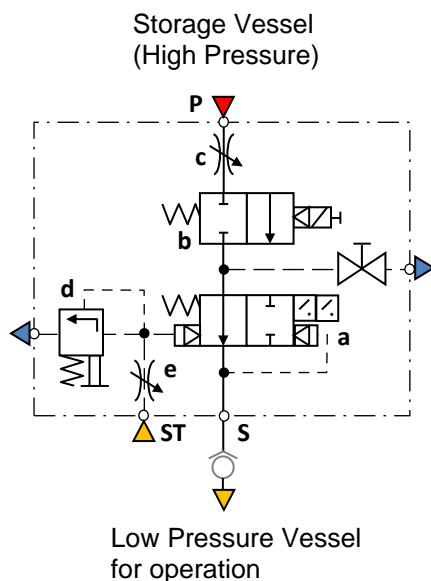


SAFETY DEVICES TYPE SHE

Safety devices of the type SHE are used to protect downstream storage vessels which are being fed by a higher operating pressure, against over pressurization. As opposed to the function of a typical safety valve, the Schrupp SHE valve protects the lower rated pressure vessel by closing the interconnection between the two vessels once the set pressure has been reached. In this way, the operational (low pressure) vessel is protected, while at the same time, maintaining the stored pressurized air necessary to ensure operation of the selected component, such as electrical switch gear.

The Schrupp SHE safety device includes the following elements:

- Locking valve with electrical position indication switch.
- Solenoid actuated, pilot operated, 2/2 way sluice valve.
- Throttling Device.
- Pressure Relief Valve
- Pilot Throttle.
- Bleed Valve.

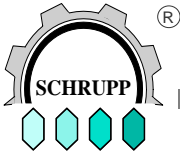


For safety reasons a check valve has to be installed at the S line.
Optional the safety device can be ordered with an integrated non return valve also.

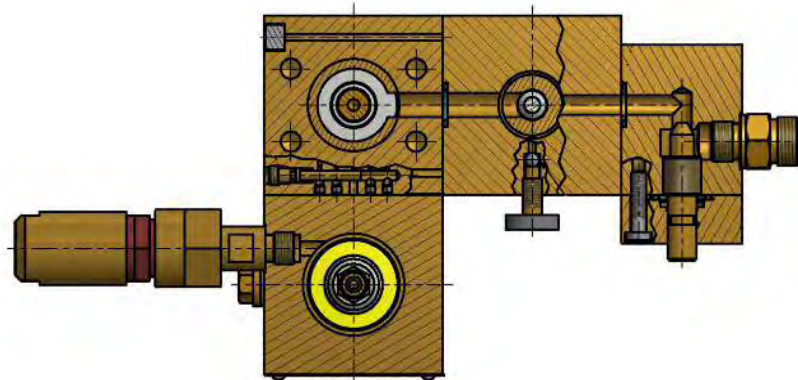
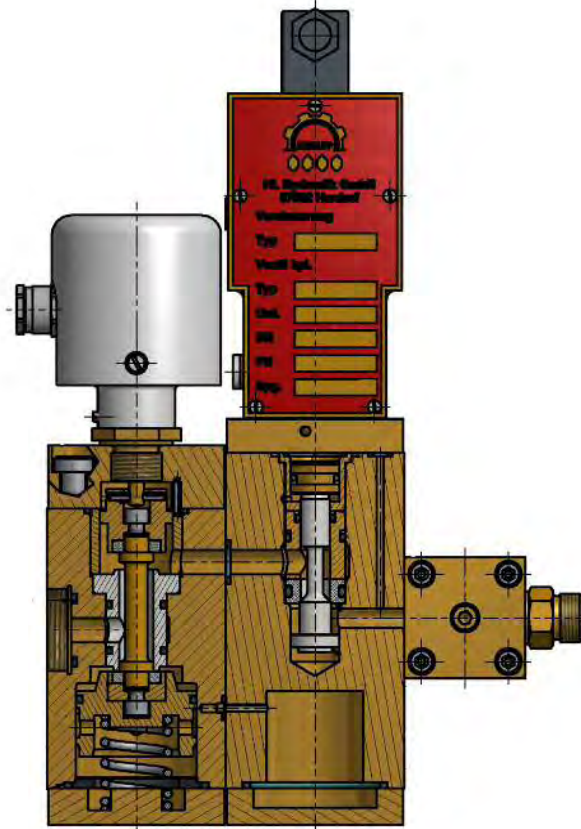
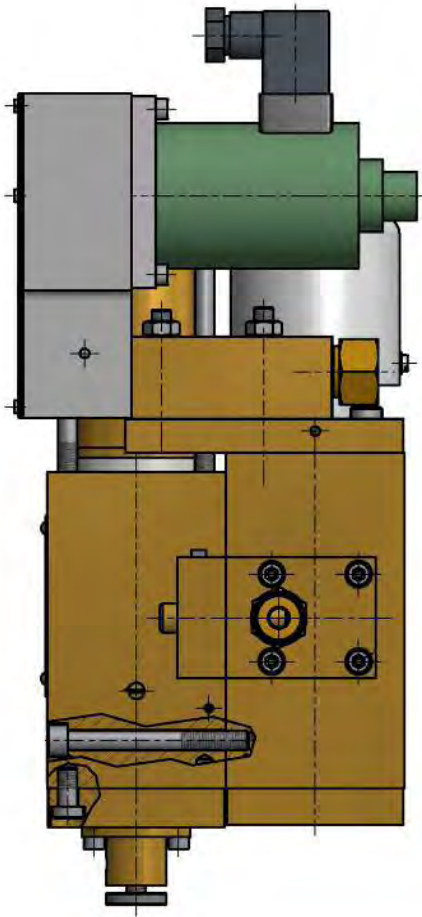
Technical Data

| TYPE | SHE MP | SHE HP | |
|--|---------|----------|-------|
| Nominal size | 20 | 10 | mm |
| Primary pressure | 64 | 64 - 200 | bar |
| Secondary pressure | 5 - 40 | 15 - 40 | bar |
| Max flow rate | 56,000 | 56,000 | l/min |
| Mass | ca. 320 | ca. 320 | N |
| Nominal size of pressure relief valve | 6 | 6 | mm |
| Port P | M36 x 2 | G 3/8" | |
| Port T | M36 x 2 | M36 x 2 | |
| Port ST connection for pipes with outside dimension: | 10 | 10 | mm |

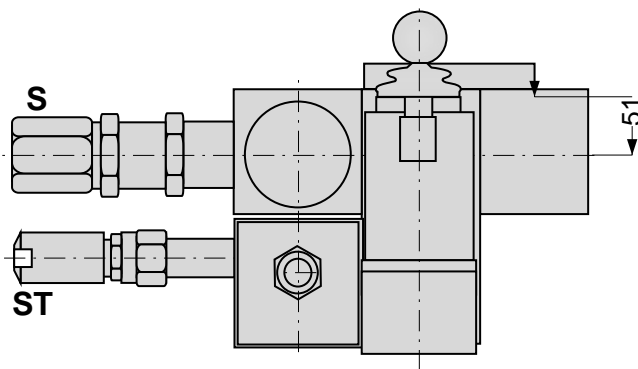
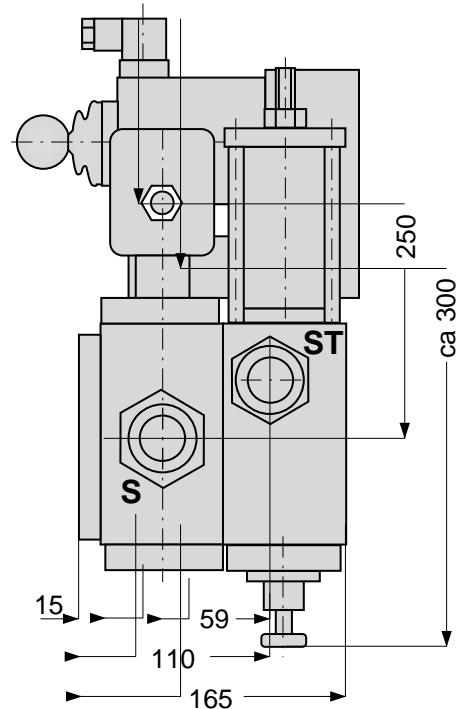
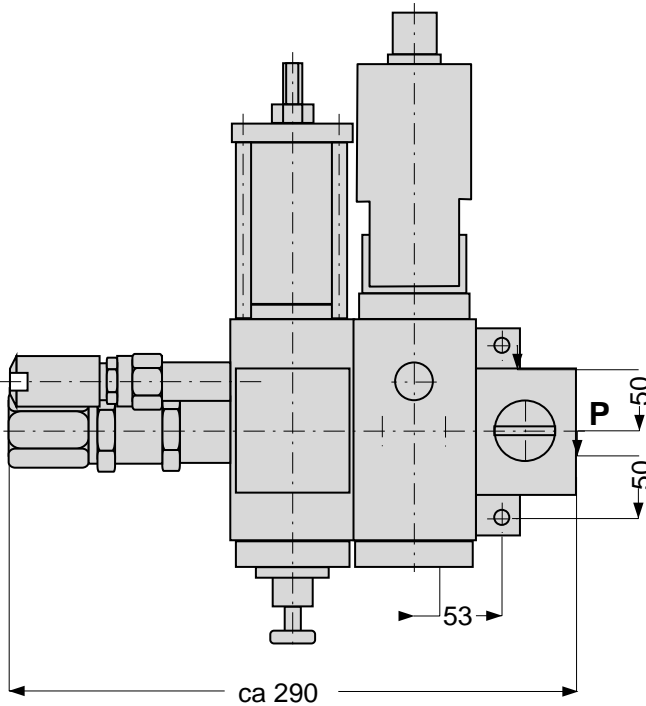
According to 2014/68/EU, Group 2, Category IV



SAFETY DEVICES TYPE SHE



SAFETY DEVICES TYPE SHE

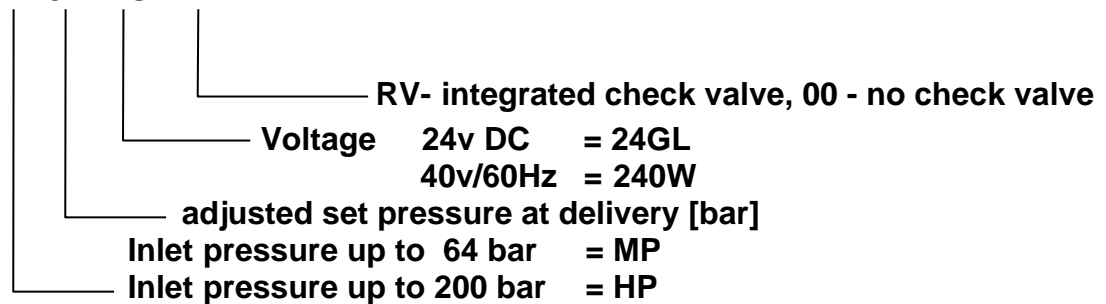


Port Connections

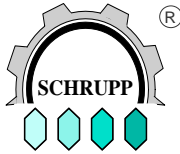
| | | | |
|--------|-----|---|---------|
| SHE MP | P,T | - | M36 x 2 |
| | St | - | 10 mm |
| SHE HP | P | - | G 3/8" |
| | T | - | M36 x 2 |
| | St | - | 10 mm |

Ordering Information

SHE MP 34 24GL RV



Spare parts kit: SHE MP 24GL RV VTS



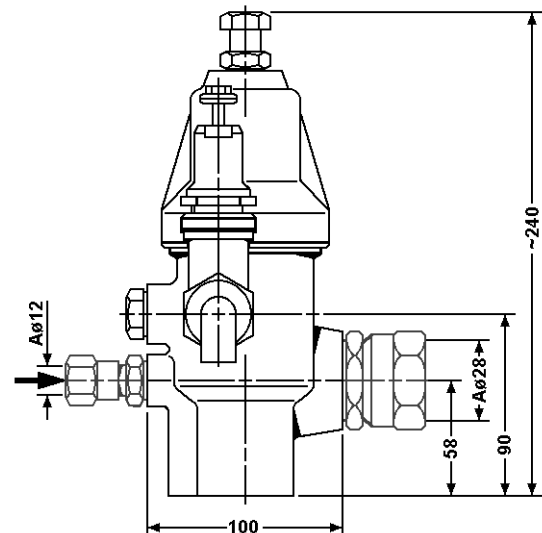
PRESSURE REDUCING VALVES TYPE DMV 08

Schrupp pressure reducing valves, type DMV08 (AP20380) are used to reduce pneumatic system pressure from a maximum primary pressure of 200 bar to a maximum secondary pressure of 60 bar. Upon reaching the adjusted outlet pressure, the leakfree Schrupp DMV08 closes. The robust design of the Schrupp pressure reducing valve is very compact and provides exact pressure control.



Technical Data

Nominal Size: 8mm
 Inlet port: G 3/8"
 Outlet port: G 1"
 Max Primary pressure: 200bar
 Max Secondary pressure: 60bar
 Min Secondary pressure: 5bar
 Flow rate 33,000L/min at 180bar dp
 Mass: ca. 45N
 Ambient Temperature 0-70°C



Ordering Code

DMV08-42-155308

(5-45bar Secondary press.)

DMV08-55-155324

(45-60bar Secondary press.)

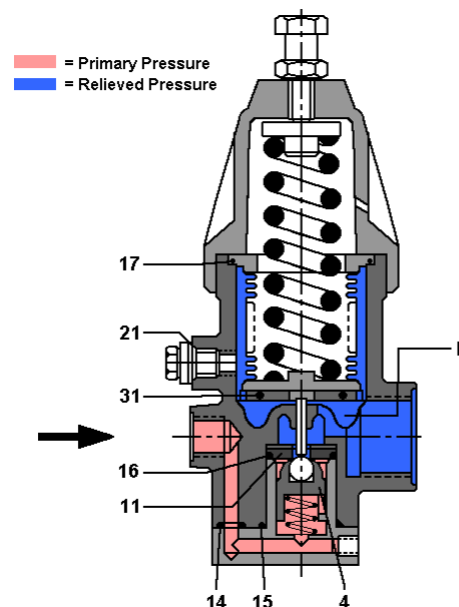
Adjusted set pressure w. delivery [bar]

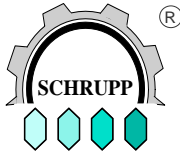
Spare Kit:

DMV08VTS-(Partnumber)

includes:

| Pos | Stk | Description |
|-----|-----|-------------|
| 4 | 1 | Piston |
| 11 | 1 | Seat Ring |
| 14 | 1 | O-Ring |
| 15 | 1 | O-Ring |
| 16 | 1 | O-Ring |
| 17 | 1 | O-Ring |
| 21 | 1 | Seal |
| 31 | 1 | O-Ring |





PRESSURE REDUCING VALVES TYPE DMV 20

Schrupp pressure reducing valves, type DMV20 are used to reduce pneumatic system pressure from a maximum primary pressure of 40 bar to a maximum secondary pressure of 25 bar. Upon reaching the adjusted outlet pressure, the leakfree Schrupp DMV20 closes. The robust design of the Schrupp pressure reducing valve is very compact and provides exact pressure control.



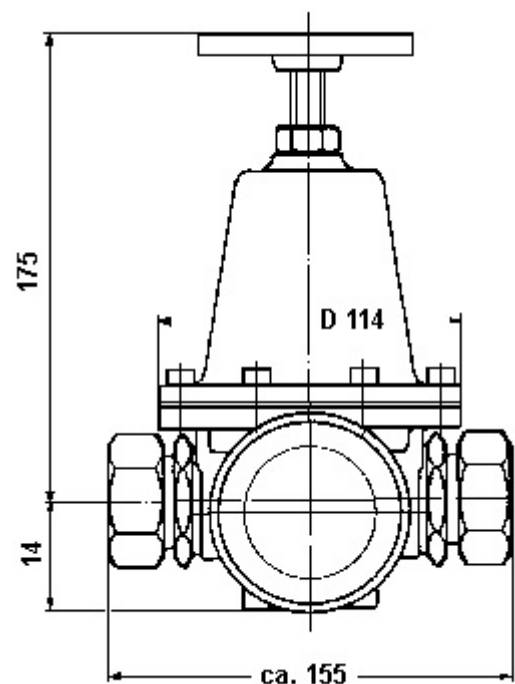
Technical Data

| | |
|----------------------|----------------|
| Size: | 20mm |
| Inlet port: | G 1" |
| Outlet port: | G 1" |
| Max inlet-pressure: | 40bar |
| Max outlet-pressure: | 25bar |
| Min outlet pressure: | 0,5bar |
| Flowrate | 7.800L/min max |
| Mass: | apr. 4Kg |
| Temperature | 0-60°C |

Ordering code

DMV20-40-453419

[Adjusted set pressure with delivery \[bar\]](#)



CARTRIDGE PROGRAM



Stainless Steel Cartridge valves according to DIN24342

The valves are designed for use with water, water and oil emulsions, oil and gases. Their robust construction and compact design provide long life, ease of maintenance, and high performance.

These slip in cartridge type valves can be combined in many different ways to satisfy the requirements of a wide variety of applications. The sealed poppet design provides drop tight, leak free shut off.

Product range:

Cartridges for directional functions

Soft seated ND10 to 100 for compressed air and gases according to Group 2, 27/93/EG up to 350bar

Functional description

These valves are designed for use with special fluids:

No metal to metal contact at the sliding surfaces.

- the use of non-lubricating mediums is possible.

All pressurized areas are separated by soft seals

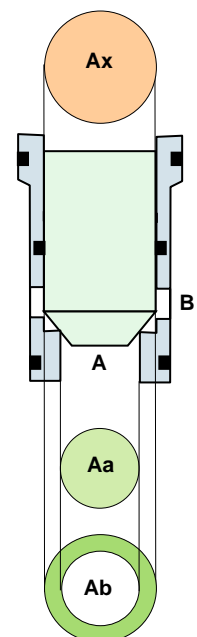
- for thin fluids and gases under high pressure.

Special geometry and non-corroding material

- for gases with an high humidity.

An important dimension for the function of cartridge valves is the surface ratio of the seat area A_a and the annulus area A_b to the pilot area P_x . Schrupp soft seated cartridge valves with metal support do have an ratio of 1:2 and can be used for flow in either direction.

Soft-seated valves are suitable for use in shut-off and directional functions. These valves are absolutely leak-free even for long-term operation in gas or high-pressure circuits.



CARTRIDGE PROGRAM

Cartridge valves Type 6

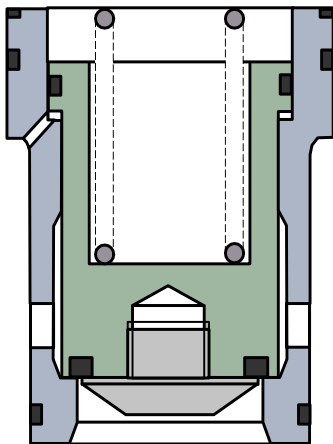
For directional and shut off applications
Dimensions according to DIN 24342
Material: stainless steel, soft seated, metal support
area ratio 1:2

Example / Order code

EO - 025 - 00 - 0.0 - 6D / S

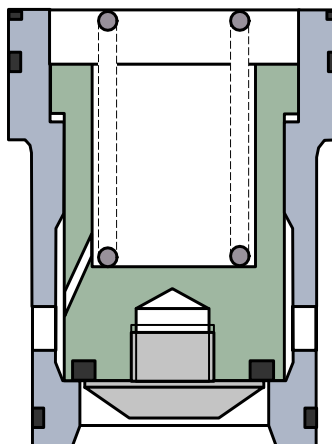
/ S = Standard design
/ R = Non return valve
/ A = Active valve

Size 010, 016, 025, 032, 040, 050, 063,
080, 100mm



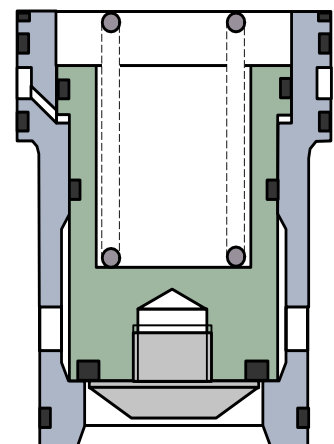
**Standard design
Type 6D / S**

350bar - ND 010 to 100
for water, oil and gas.



**Non return valve
Type 6D / R**

Up to 350bar - ND 010, 016,
025 for water, descaling water,
oil and gas.

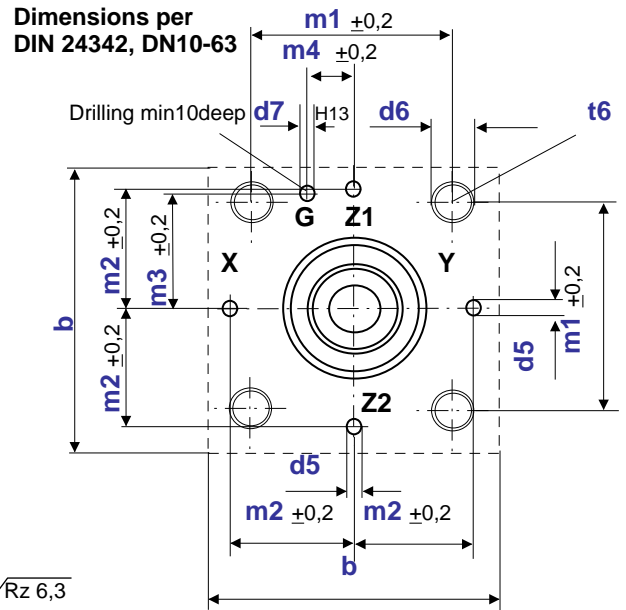
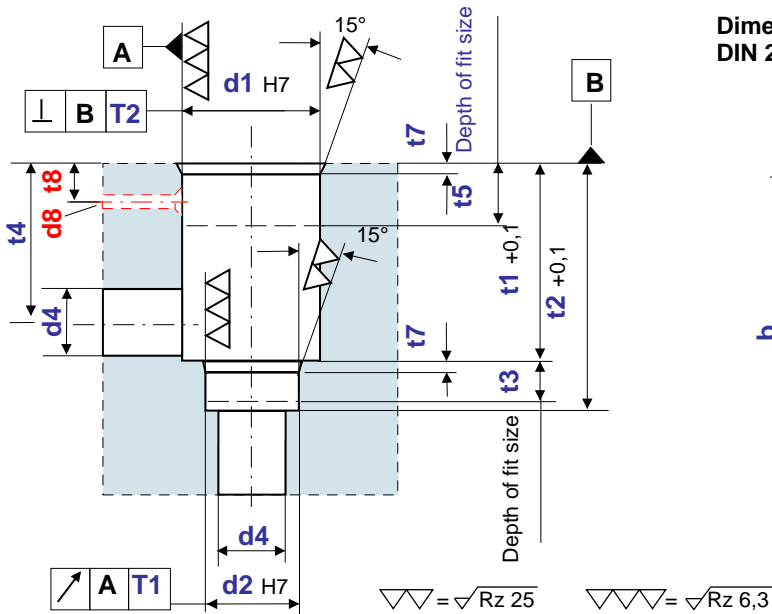
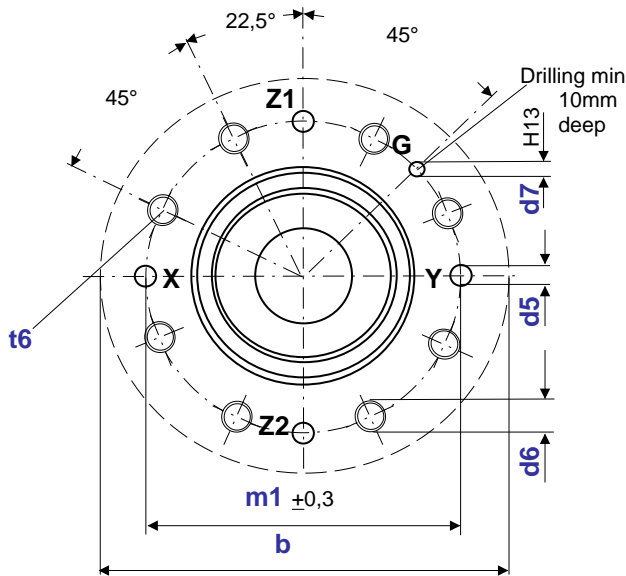


**Active valve
Type 6D / A**

Up to 350 bar - ND 16 to 100
for water, oil and gas

OPTIONS:

Seawater resistant versions, expanded temperature range (200°C),
expanded pressure range to 420bar (10% reduced flow rate)

CARTRIDGE PROGRAM

Dimensions per DIN 24342, DN80-100


| DN | b | d1 | d2 | d4 | d5 | d6 | d7 | d8 | m1 | m2 | m3 | m4 | t1 | t2 | t3 | t4 | t5 | t6 | t7 | t8 | T1 | T2 |
|-----|-----|-----|-----|-----|----|-----|----|----|-----|----|------|------|-----|-----|----|-----|-----|----|-----|----|------|------|
| 10 | 52 | 20 | 16 | 10 | 3 | M5 | 3 | - | 40 | 19 | 17 | 12 | 26 | 35 | 8 | 20 | 13 | 10 | 1,5 | - | 0,03 | 0,05 |
| 16 | 65 | 32 | 25 | 16 | 4 | M8 | 4 | 4 | 46 | 25 | 23 | 10,5 | 43 | 56 | 11 | 34 | 24 | 20 | 2 | 13 | 0,03 | 0,05 |
| 25 | 85 | 45 | 34 | 25 | 6 | M12 | 6 | 5 | 58 | 33 | 29 | 16 | 58 | 72 | 12 | 44 | 30 | 25 | 2,5 | 15 | 0,03 | 0,05 |
| 32 | 102 | 60 | 45 | 32 | 8 | M16 | 6 | 5 | 70 | 41 | 35 | 17 | 70 | 85 | 13 | 52 | 34 | 35 | 2,5 | 21 | 0,03 | 0,1 |
| 40 | 125 | 75 | 55 | 40 | 10 | M20 | 6 | 6 | 85 | 50 | 42,5 | 23 | 87 | 105 | 15 | 64 | 42 | 35 | 3 | 27 | 0,05 | 0,1 |
| 50 | 140 | 90 | 68 | 50 | 10 | M20 | 8 | 8 | 100 | 58 | 50 | 30 | 100 | 122 | 17 | 72 | 46 | 40 | 4 | 30 | 0,05 | 0,1 |
| 63 | 180 | 120 | 90 | 63 | 12 | M30 | 8 | 8 | 125 | 75 | 62,5 | 38 | 130 | 155 | 20 | 95 | 62 | 55 | 4 | 35 | 0,05 | 0,2 |
| 80 | 250 | 145 | 110 | 80 | 16 | M24 | 10 | 10 | 200 | - | - | - | 175 | 205 | 25 | 130 | 88 | 45 | 5 | 55 | 0,05 | 0,2 |
| 100 | 300 | 180 | 135 | 100 | 20 | M30 | 10 | 10 | 245 | - | - | - | 210 | 245 | 29 | 155 | 110 | 55 | 5 | | 0,05 | 0,2 |

Details of the cavities for cartridge valve 6D/A (active) please see our separate datasheets

SLUICE OR DIRECTIONAL VALVES TYPE WEV

2/2, 3/2 Directional Valves Type WEV 06

These robust and smooth operating valves can be used with compressed air, oil, water and emulsions. All ports can be pressurised. The valves type 500100, 500106 and 500008 are equipped with soft seats for a leak-free function. The piston is spring biased in the closed position and allows a fail safe operation so that the valve can be used for accumulator safety functions also.

Variations:

- solenoid operated
- manually operated
- hydraulically operated
- Limit switches

Type WEV 06 - 500100

NP 250bar ND6mm

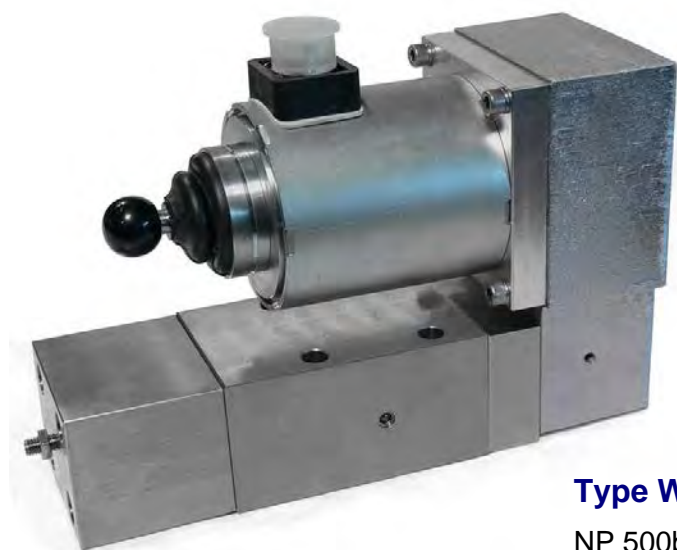
compressed air,
gases Group 2 on request



Type WEV 06 - 500138

NP 250bar ND6mm

Water, oil and emulsions



Type WEV 06 - 500106

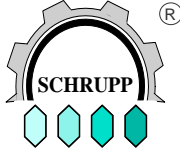
NP 350bar ND6mm

compressed air,
gases Group 2 on request

Type WEV 06 - 500008

NP 500bar ND6mm

Water, oil and emulsions

**SLUICE OR DIRECTIONAL VALVES TYPE WEV****2/2, 3/2 Direction Valves Type 500106**

These directional control valves are used to channel air from a high pressure reservoir to operating vessels with a lower pressure. The Schrupp sluice valves are direct solenoid operated 2/2 way valve size NG6 (3/8") or can be combined with our leak free cartridge assembly for larger sizes. In combination with other devices including pressure reducing valves, relief or safety valves, filters, throttles, etc., the Schrupp WEV series valves can be used for multiple applications in a high pressure pneumatic system.

All ports can be pressurised with full operating pressure to allow flow in any direction. This valve can be operated as a three way or two way directional control valve.

**Technical Data**

| | |
|--------------------------|--------------------------------------|
| Pressure Range | 0-350 bar |
| Design Pressure | 500bar |
| Nominal Size | DN6 |
| Operating Temperature | -20 bis+80 °C |
| Ambient Temperature | max 70 °C |
| Medium | Compressed air, Gas |
| Recommended Filtration . | 25 micron |
| Max.Power Consumption | 42 W |
| I.D. | 100% |
| Electr. Protection Class | IP 65 |
| Voltage Tolerance | +5 to -10% VDE580 |
| Opening and closing Time | 100 - 200 ms |
| Material | Stainless Steel, PTFE, POM, Viton |

Ordering Code

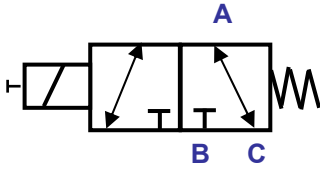
Valve: **WEV06P-250-500106-01-024G** 24V DC
└──────────┬──────────
 120W 110V/50Hz (60Hz)
 240W 220V/50Hz (60Hz)
 max. operating pressure in bar

*Other voltages on request

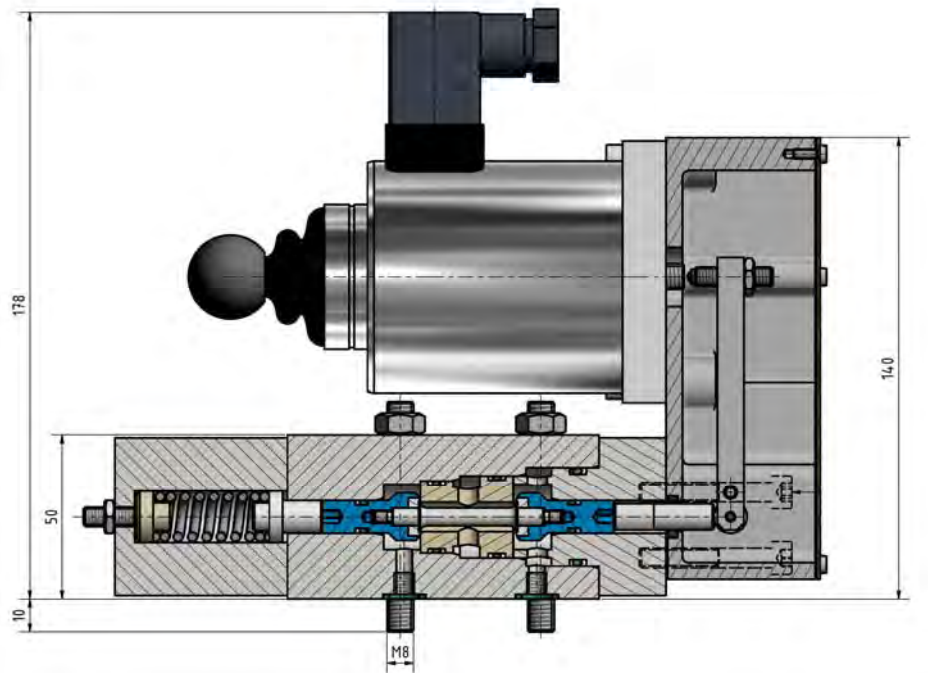
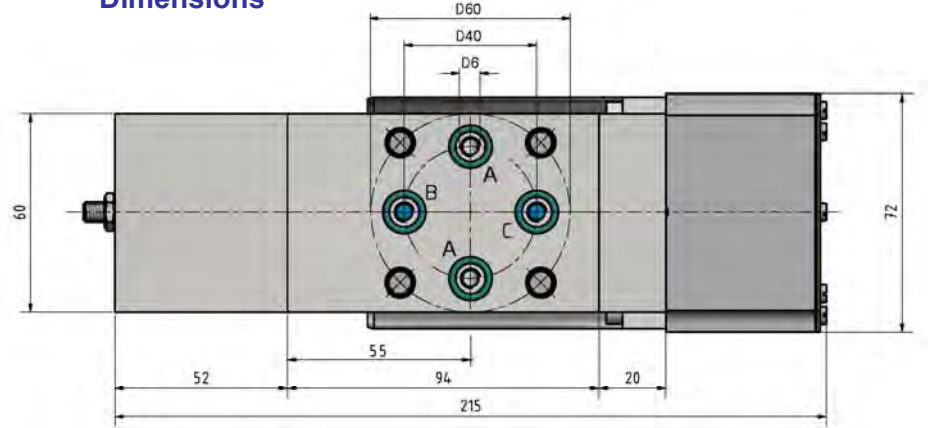
Seal Kit: WEV06VTS-500006-01-92

SLUICE OR DIRECTIONAL VALVES TYPE WEV

Symbol

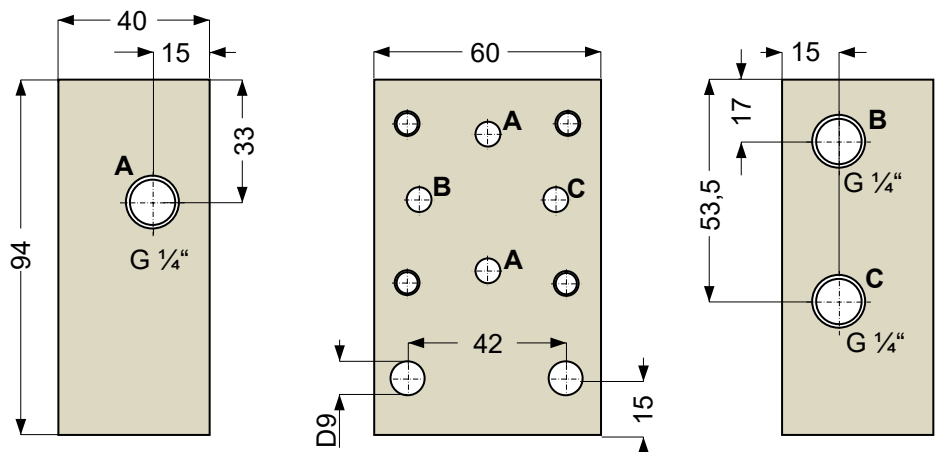


Dimensions



Subplate for WEV 500106-01

Dimensions



Ordering Code

Subplate: 850252

SLUICE OR DIRECTIONAL VALVES TYPE WEV
2/2, 3/2 Directional Valve Type 500100

These directional control valves are used to channel air from a high pressure reservoir to operating vessels with a lower pressure. The Schrupp sluice valves are direct solenoid operated 3/2 way valve size NG6 or can be combined with our leak free cartridge assembly for larger sizes. In combination with other devices including pressure reducing valves, relief or safety valves, filters, throttles, etc., the Schrupp WEV series valves can be used for multiple applications in a high pressure pneumatic system.

All ports can be pressurised with full operating pressure to allow flow in any direction. This valve can be operated as a three way or two way directional control valve.


Technical Data

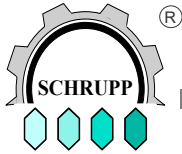
| | |
|--------------------------|-------------------------------|
| Operating Pressure | 0-250 bar |
| Nominal Size | DN6 |
| Operating Temperature | -20 bto+80 °C |
| Ambient Temperature | max 70 °C |
| Medium | Compressed Air,,Gas |
| Recommended Filtration | 25micron |
| Max.Power Consumption | 42 W |
| I.D. | 100% |
| Electr. Protection Class | IP 65 |
| Voltage Tolerance | +5 to -10% VDE580 |
| Opening and closing Time | 100 - 200 ms |
| Material | Stainless Steel, Brass, Viton |

Ordering Code

Valve: **WEV06P-250-500100-01-024G** 24V DC
 120W 110V/50Hz (60Hz)
 240W 220V/50Hz (60Hz)
 —max. operating pressure in bar

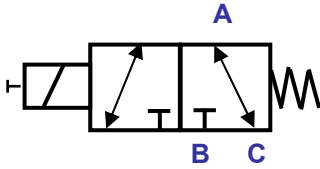
*Other voltages on request

Seal Kit: WEV06 VTS-500100-01-92

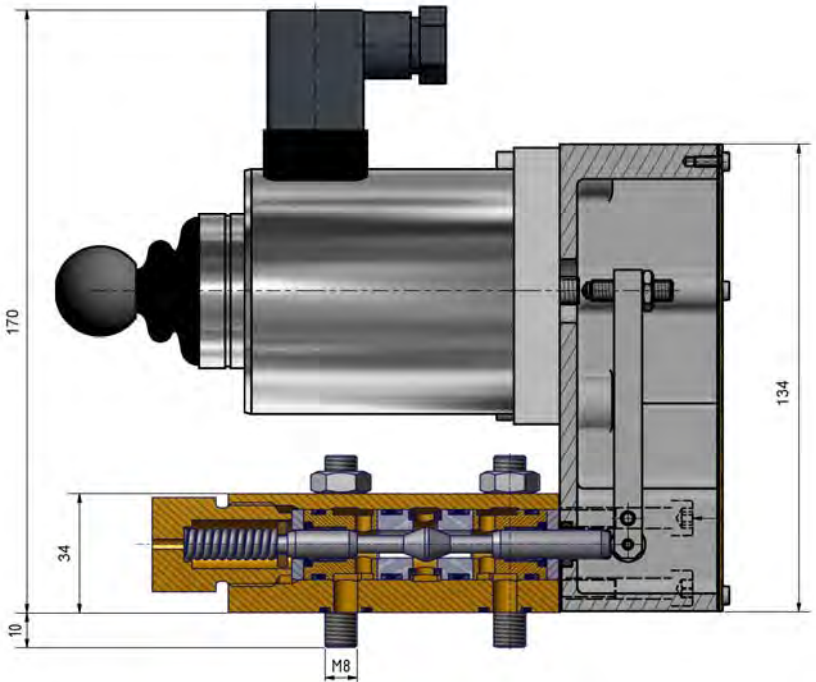
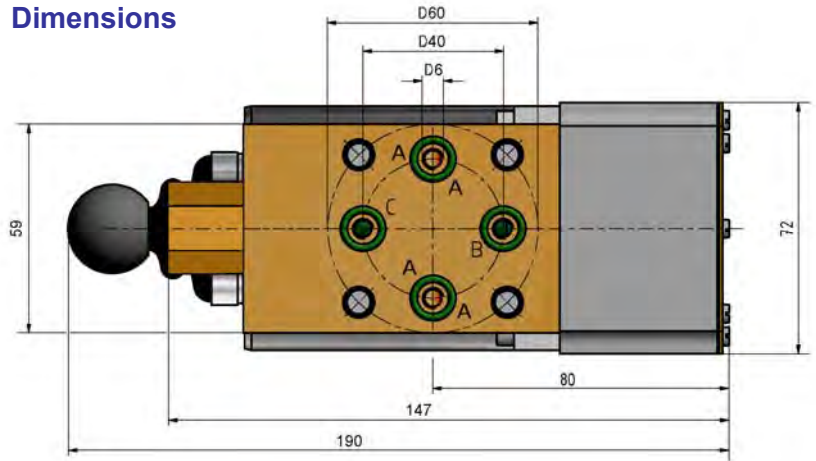


SLUICE OR DIRECTIONAL VALVES TYPE WEV

Symbol

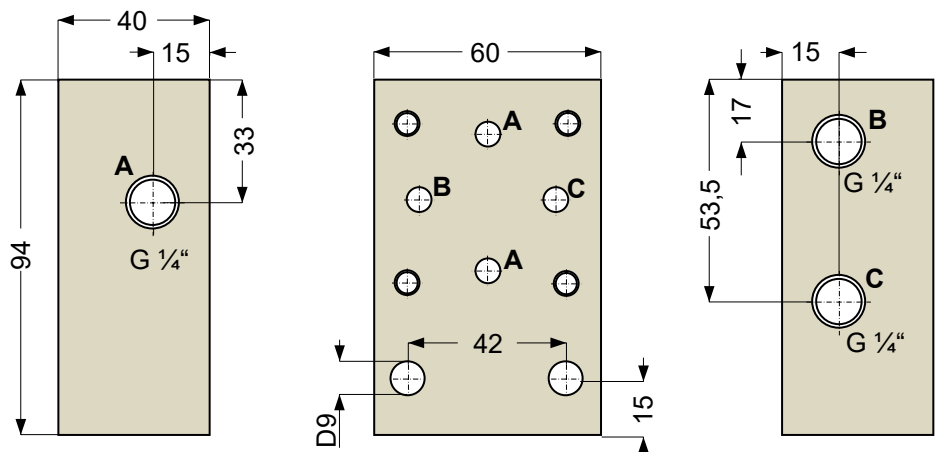


Dimensions



Subplate for WEV06P

Dimensions



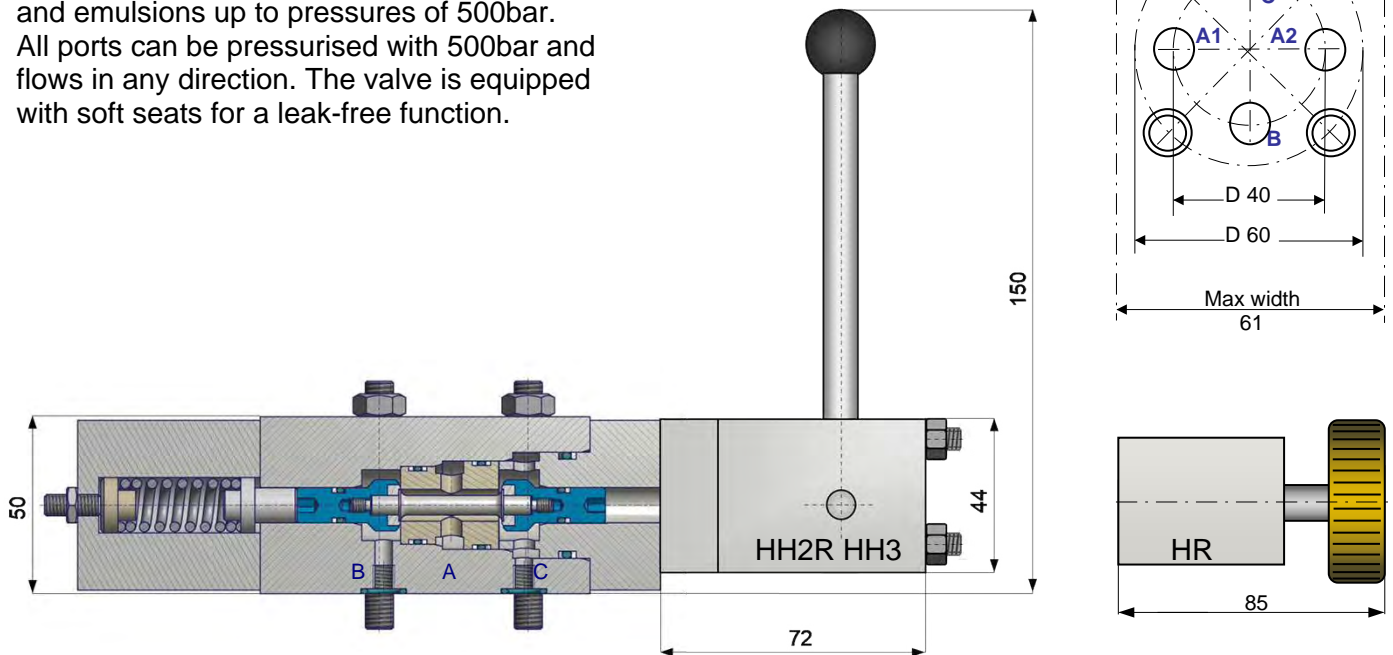
Ordering Code

Subplate: 850252

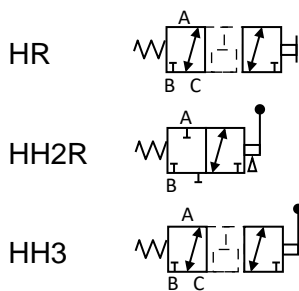
SLUICE OR DIRECTIONAL VALVES TYPE WEV

Manual Operated Valves Type 500008 / 500106

can be used with compressed air, oil, water and emulsions up to pressures of 500bar. All ports can be pressurised with 500bar and flows in any direction. The valve is equipped with soft seats for a leak-free function.



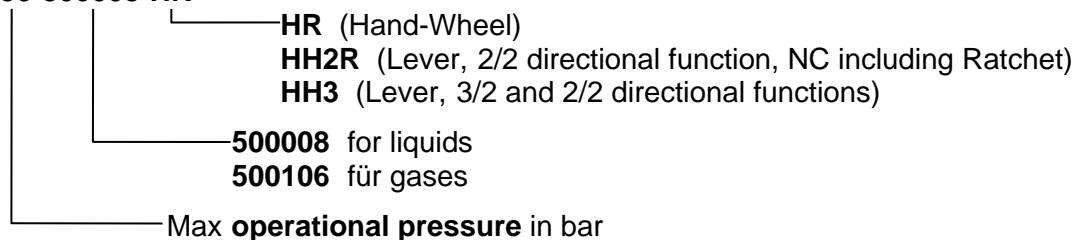
Technical Data



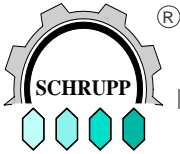
| | |
|------------------------|---------------------------------------|
| Operating Pressure | 0-500 bar |
| Nominal Size | DN6 |
| Operating Temperature | -20 bis +80 °C |
| Ambient Temperature | max 70 °C |
| Medium | Gases, Water, Oil |
| Recommended Filtration | |
| 0 to 350bar | 25 my |
| 350bar to 500bar | 10 my |
| Material | Stainless Steel, Brass, Delrin, Viton |

Ordering Code

Valve: **WEV06P-250-500008-HR**



Others on request



SLUICE OR DIRECTIONAL VALVES TYPE WEV

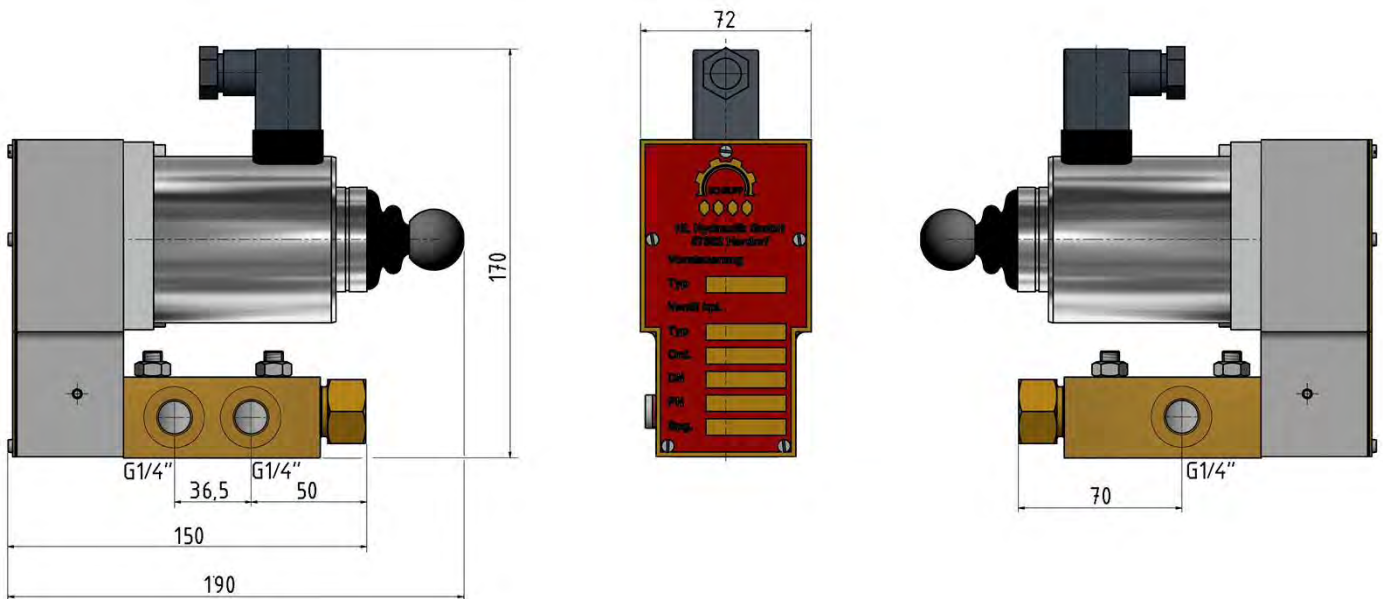
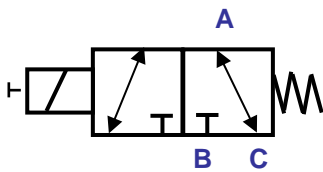
3/2, 2/2 Directional Valve DN6 PN250 with Thread Connections

TYPE: WEV06RL-250-500104-01-024G 24V DC
110W 110V/50Hz (60Hz)
220W 220V/50Hz (60Hz)
max operation pressure [bar]

Partnumber: 500104

These directional control valves are identical to series 500100 but have a housing with threaded connections. The valve can be used compressed for air and gas media up 250bar operating pressure.

Please find technical data at catalogue E1.7.3.

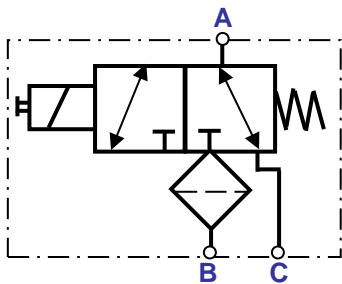


SLUICE OR DIRECTIONAL VALVES TYPE WEV

3/2, 2/2 directional Control Valve DN6 PN250 with filter, for compressed air

TYPE: WEV06FL- 250 - (Part no.) - 024G 24V DC
110W 110V/50Hz (60Hz)
220W 220V/50Hz (60Hz)

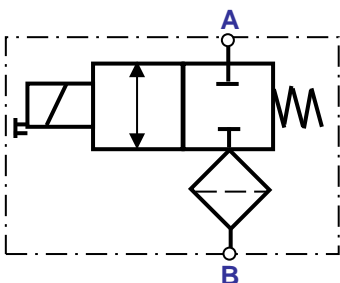
These directional control valves are used to channel air from a high pressure reservoir to operating vessels with a lower pressure. An integrated 80 micron cleanable filter at port R protects the valve against dirt particles. The Schrupp sluice valves are direct solenoid operated 2/2 way valves size NG6 (3/8") or can be combined with our leak free cartridge assembly for larger sizes, or in combination with other devices including pressure reducing valves. Max operating pressure 250bar.



Ports A, B, C - G1/4"
Part no. 451443-01

Spare parts for filter:

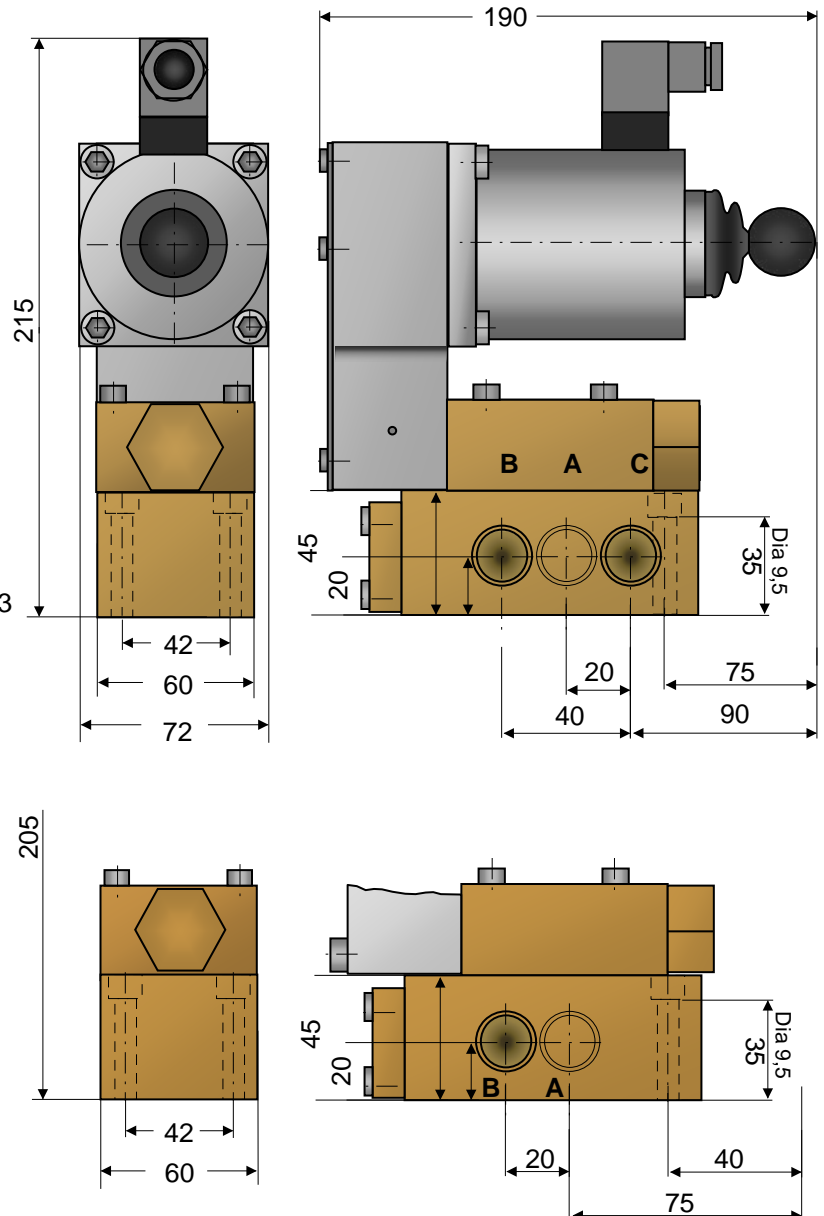
1Stk filter element Part no. 157346
 1Stk O – Ring Part no. 080098
 Spare parts for directional valve see page E1.7.3

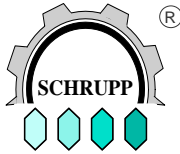


Ports A, B - G1/2"
Part no. 503690-01

Ports A, B - M22x1,5
Part no. 503382-01

Spare parts see above





SLUICE OR DIRECTIONAL VALVES TYPE WEV

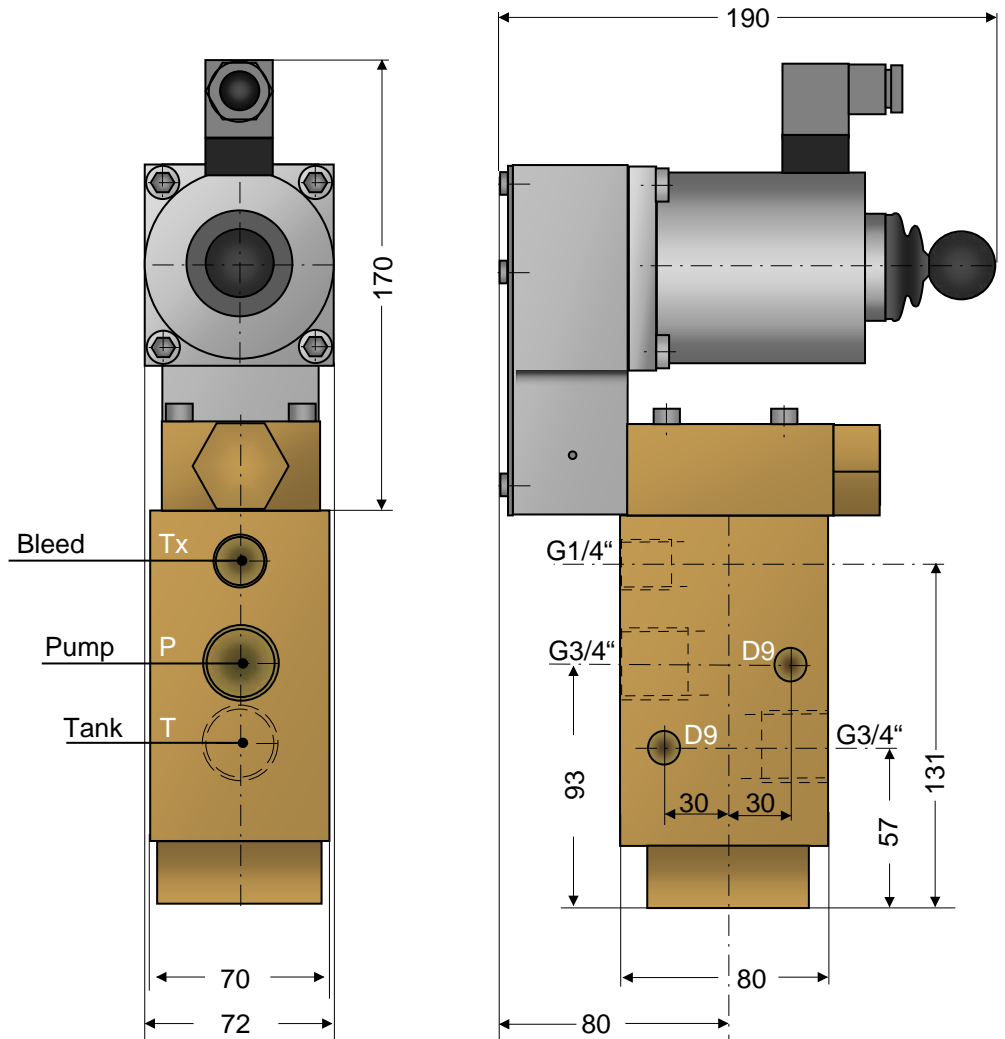
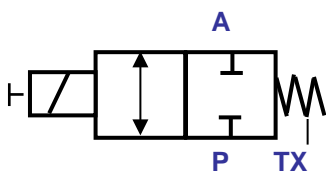
2/2 Directional Control Valve DN16 PN250 with threaded ports for compressed air, water, oil

TYPE: WEV16RL-250- (Part no.) - 024G 24V DC
110W 110V/50Hz (60Hz)
220W 220V/50Hz (60Hz)

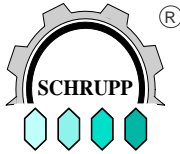
└─ **Max operating pressure [bar]**

Part no. 450737-01

These leak free directional valves size 16mm with threaded connections can be used in compressed air systems up to 250bar. Special designs for water or oil applications on request. All ports can be operated with the maximum pressure. The valve includes a soft seated DIN cartridge size 16 type EO-16-00-6D/S, that is piloted by a type 500100 pilot valve.



Spare Parts
Pilot valve see page E1.7.3
Cartridge valve ND 16
Part no. 165991



SLUICE OR DIRECTIONAL VALVES TYPE WEV

2/2 Directional Valve DN16 PN250 with Check Valve

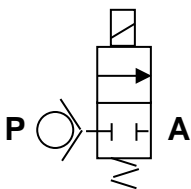
Application

These valves are used as sluice valves between high and low pressure reservoirs. They combine a 2/2 way pilot operated directional control valve and a check valve. The Schrupp WEV 16 R directional valves can also be used for diesel engine start up.

Technical Data

Housing – Brass
Internal Parts – Stainless Steel
Seals – Viton, Teflon, Delrin

| | |
|-----------------------------|-----------------------|
| Pressure Range | 0-250bar |
| Nominal Size | DN 16 |
| Temperature Range | -20 to+80°C |
| Ambient Temperature | max 70°C |
| Medium | compressed air, Gases |
| Voltages | 24-240V Gs/ Ws |
| Max.Power Consumption | 43W |
| I.D. | 100% |
| Electrical Protection Class | IP 65 |
| Voltage Tolerance | +5bis –10% VDE580 |

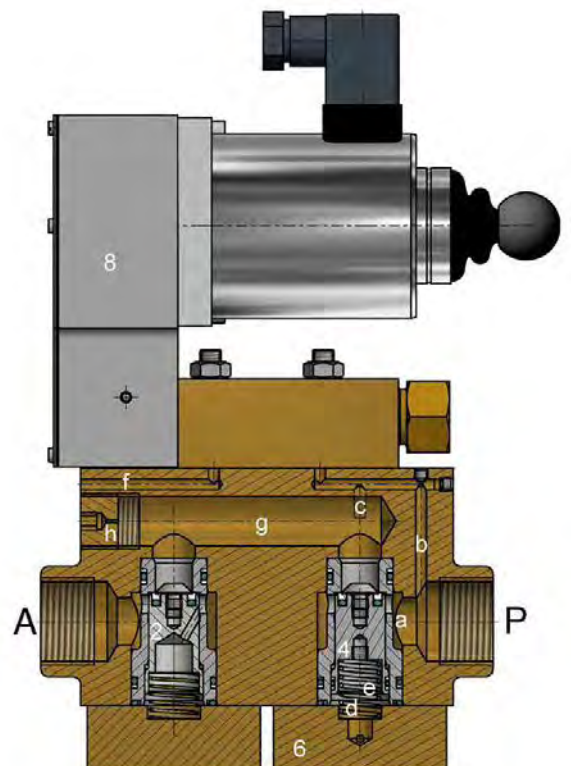


Functional Description

When the solenoid of the 3/2 way pilot valve is de-energized, piston area d is connected through drillings band c to port P. The piston of cartridge valve position 4 is closed by the spring. By energizing the solenoid of the pilot valve, drilling b will be blocked and c and f are connected. The cartridge valve will be opened by the pressure in Port P. The check valve allows flow only from P to A. During this operation a small volume of air will pass through a nozzle.

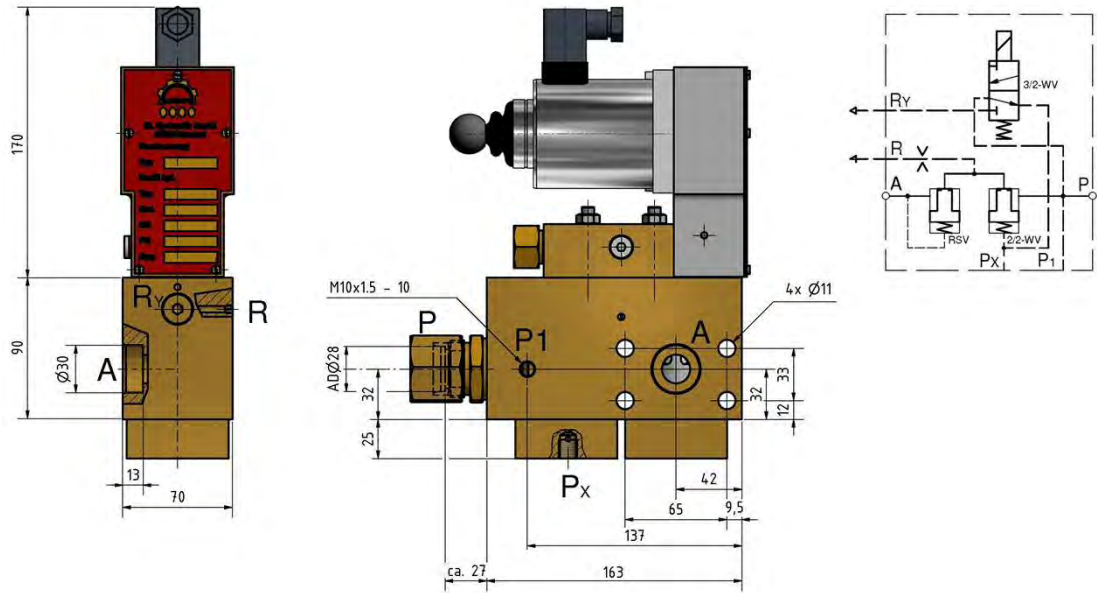
Spare Parts WEV 16 VTS

| Item | Quantity | Description | Part no: |
|------|----------|-----------------------|----------|
| 2 | 1 | Check Valve DN16 | 165997 |
| 4 | 1 | Cartridge Valve DN 16 | 166074 |
| 6 | 1 | Rd-Ring | 080050 |
| 8 | 1 | Pilot Valve DN 6 | 500000 |

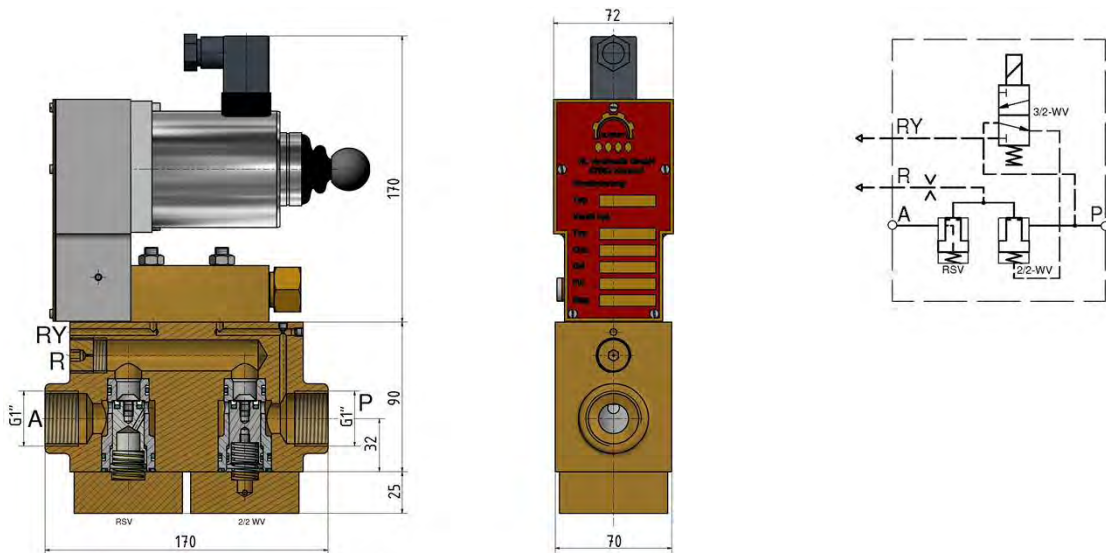


SLUICE OR DIRECTIONAL VALVES TYPE WEV

Part No.: 168870-01



Part No.: 452617-01



Ordering Code:

WEV 16 R **024V**

Voltage

024V, 110V/50-60Hz, 220-240V/50-60Hz
others on request

Part No.

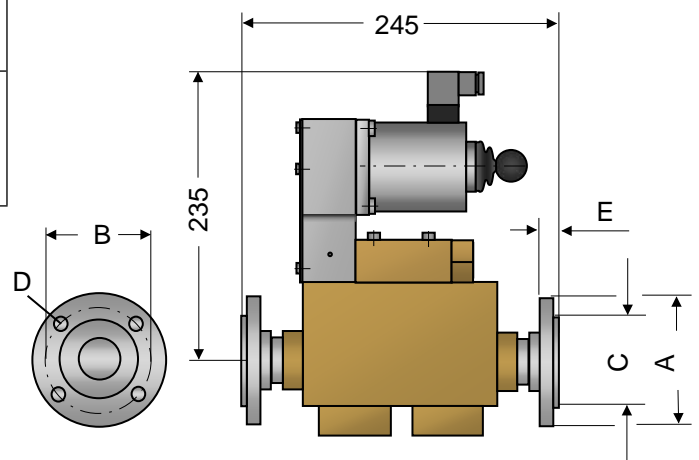
SLUICE OR DIRECTIONAL VALVES TYPE WEV

Modification Sets and Accessories (do not use for new applications)

Valve Type 168870 with Flange connections

| Part No. | Flange | A | B | C | D | E | Flange per |
|----------|--------|-----|-----|----|----|----|------------|
| 452631 | DN 20 | 105 | 75 | 58 | 14 | 18 | DIN 2567 |
| 452632 | DN 25 | 115 | 85 | 68 | 14 | 18 | PN 40 |
| 542633 | DN 40 | 150 | 110 | 88 | 18 | 18 | |
| 452634 | DN 20 | 130 | 90 | 68 | 18 | 22 | DIN 2569 |
| 452635 | DN 25 | 140 | 100 | 78 | 18 | 24 | PN 100 |
| 452636 | DN 40 | 170 | 125 | 98 | 23 | 26 | |

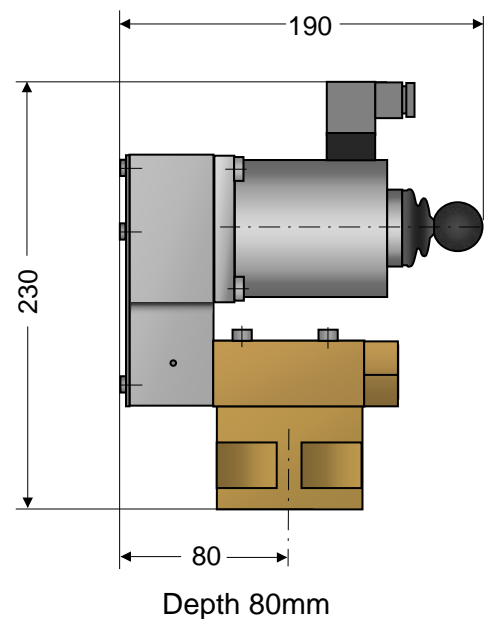
Part No for Valve type 168870 including flanges

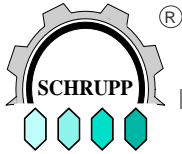


Modification set

In many systems there are still type AP 1820, AP 6225 or AP 6733 valves in operation. For technical reasons, it is not still possible to produce the original pilot valves. To upgrade these valves with new pilot valves Type 500000 it is necessary to assemble a modification set. Especially when the main stage of the valve is in good condition it is more economical to replace only the pilot valve than it is to invest in a complete new valve.

Part no. modification set 502136





GAS DRYER STATIONS

SCHRUPP GAS DRYER STATIONS Optional with Bypass

**For compressed Air and other
non- aggressive gaseous media:**

- drying
- de-oiling
- filtering

this means

- less corrosion
- less wear and
- no icing
- depressurized standby function

and therefore

- greater service life
- lower maintenance costs and
- fail safe operation

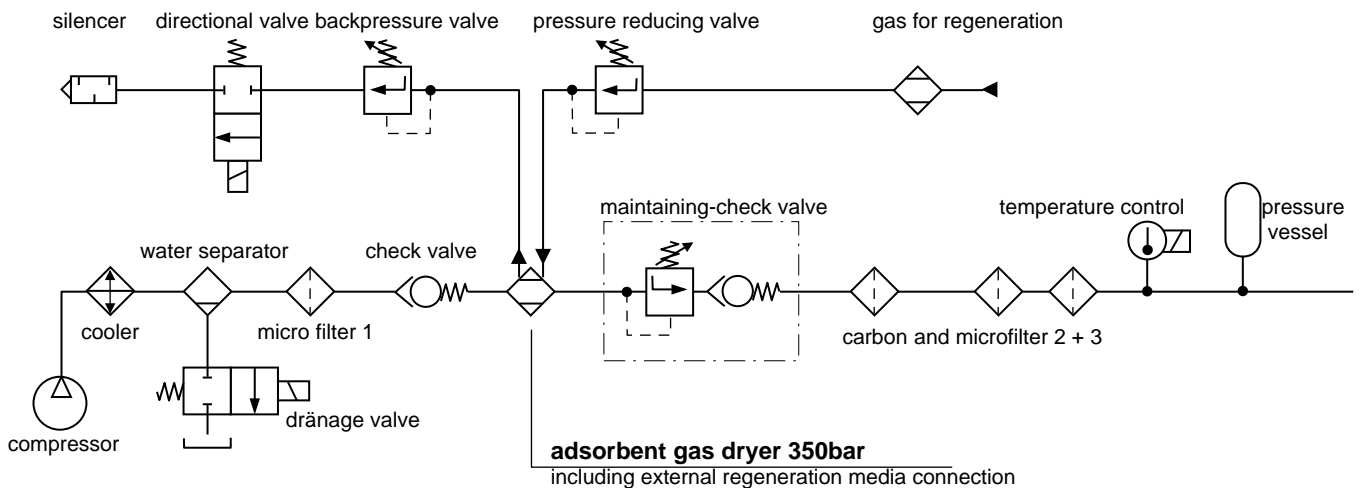


GAS DRYER STATIONS

Gas Processing Systems

Efficient Solutions for processing breathing air or industrial atmosphere.

- designed for continuous production of compressed air or class 2 gases
- excellent efficiency by use of an external regeneration media
- dew points below -50°C
- temperature compensated processing
- drying process independent from inlet temperature
- no thermal regeneration necessary
- operation pressures up to 350bar



GAS DRYER STATIONS

Gas dryer stations are assembled and tested and will be supplied ready for installation according to customers' requirements. Normally all components are assembled on a common frame but it is also possible to select the items separately and integrate them into an existing system.

Variations:

Pressure ranges 30-65 bar, 65-250bar, 250-350bar

Media: industrial air, breathing air, non-flammable and non-aggressive chemical or toxic gases

Flowrates up to 1000L/min and up to 1400L/min

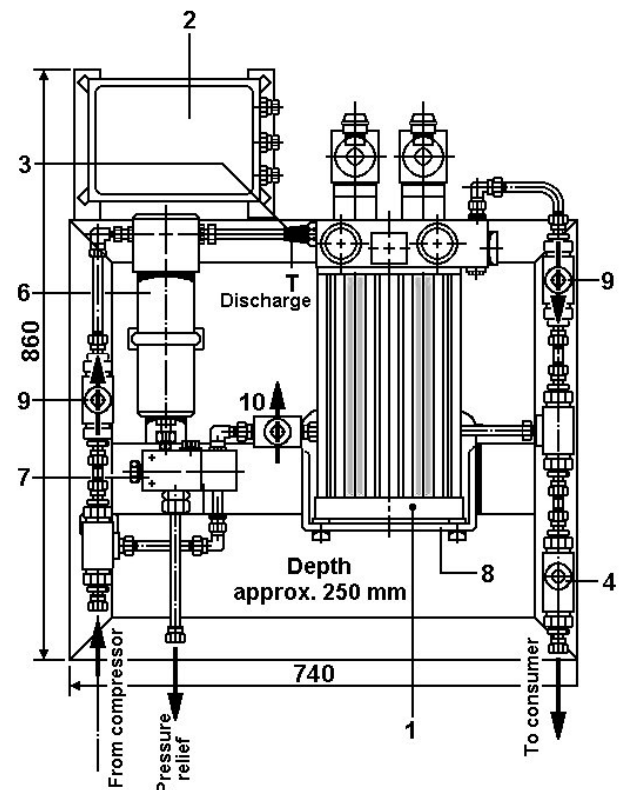
Special solutions for external regeneration gases, offshore atmospheres, additional filtration and absorber filters for breathing or clean air applications. TÜV or GL certificates available.

Systems and components shown in this catalogue are only examples to explain the general function of our products. Please contact us for details or any special applications.

GAS DRYER STATION GTS (Example: unit for industrial application)

- | | | |
|------|---------------------------------------|-----------------------|
| 1 | 1 Gas dryer | Type GTR |
| | Operating pressure | 30 - 350 bar |
| | Flow rates up to | 1400 l/min |
| | Regeneration air | 5-10% |
| | Control voltage | AC or DC |
| 2 | 1 Electrical control unit | 3 1 Silencer |
| 4 | 1 Pressure maintaining valve | 5 2 Check valves |
| 6 | 1 Fine filter | 7 1 Directional valve |
| 8 | 1 Mounting frame | |
| 9/10 | 1 Version with bypass (Option) | |
| | 3 shut off valves + additional piping | |

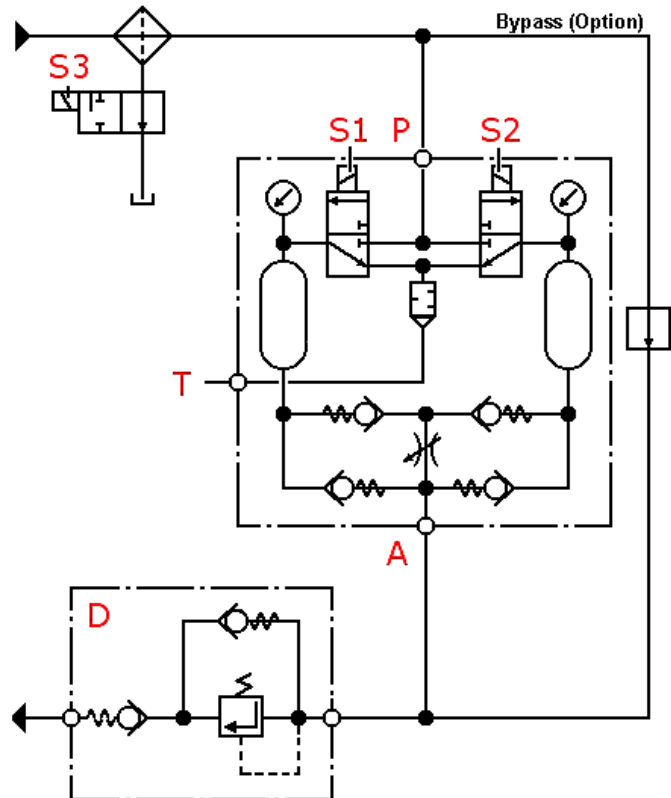
Unit complete assembled and tested



GAS DRYER STATIONS

Functional Diagram

- S3 Fine filter +
electrically operated drain valve
- P High pressure inlet GTR
- B Bypass (Option)
(maintenance)
- T Vent connection
- A High pressure outlet GTR
- D Pressure maintaining unit



Functional description

The gas dryer station consists of a gas dryer, fine filter with drain valve, pressure maintaining check valve, shut off valves, optional bypass and an electrical control unit.

All components are assembled on a mounting frame, piped, wired and tested..

Compressed air from the copressor with high humidity passes the fine filter (S3) and enters into the Gas dryer (P). The fine filter separates free water particles from the compressed air which will be drained automatically by the directional valve if the compressor is not in operation.

The two directional valves (S1, S2) at the dryer will connect the inlet (P) to one adsorber reservoir, so that air with low humidity will exit at Port A. (For detailed information please see page E1.8.7).

The pressure maintaining check valve unit (D) creates an adjustable back pressure during the operation and keeps the system pressure lower if the compressor is not in operation so that the system can be drained.

The optional bypass allows repairs or maintenance work without an interruption of the air supply.

GAS DRYER STATIONS

For high pressure air and non aggressive Medium for:

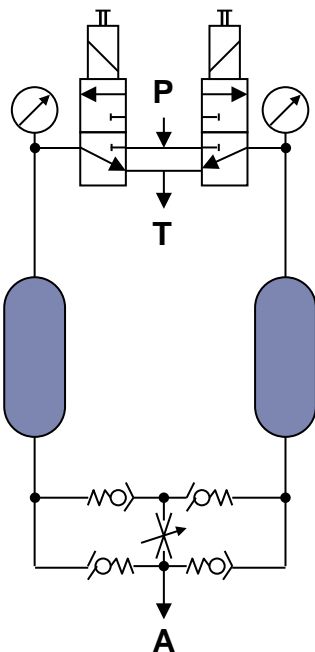
- drying
- de-oiling
- filtering

- Benefits

- less corrosion
- less wear
- no icing

and consequently

- longer service life
- lower maintenance costs
- fail-safe operation



Orderno. and example

GTR 10 **HP 335** **024**

Voltage

024 24V DC

240 220-240V/50Hz

Oper. pressure

MP 30-250bar

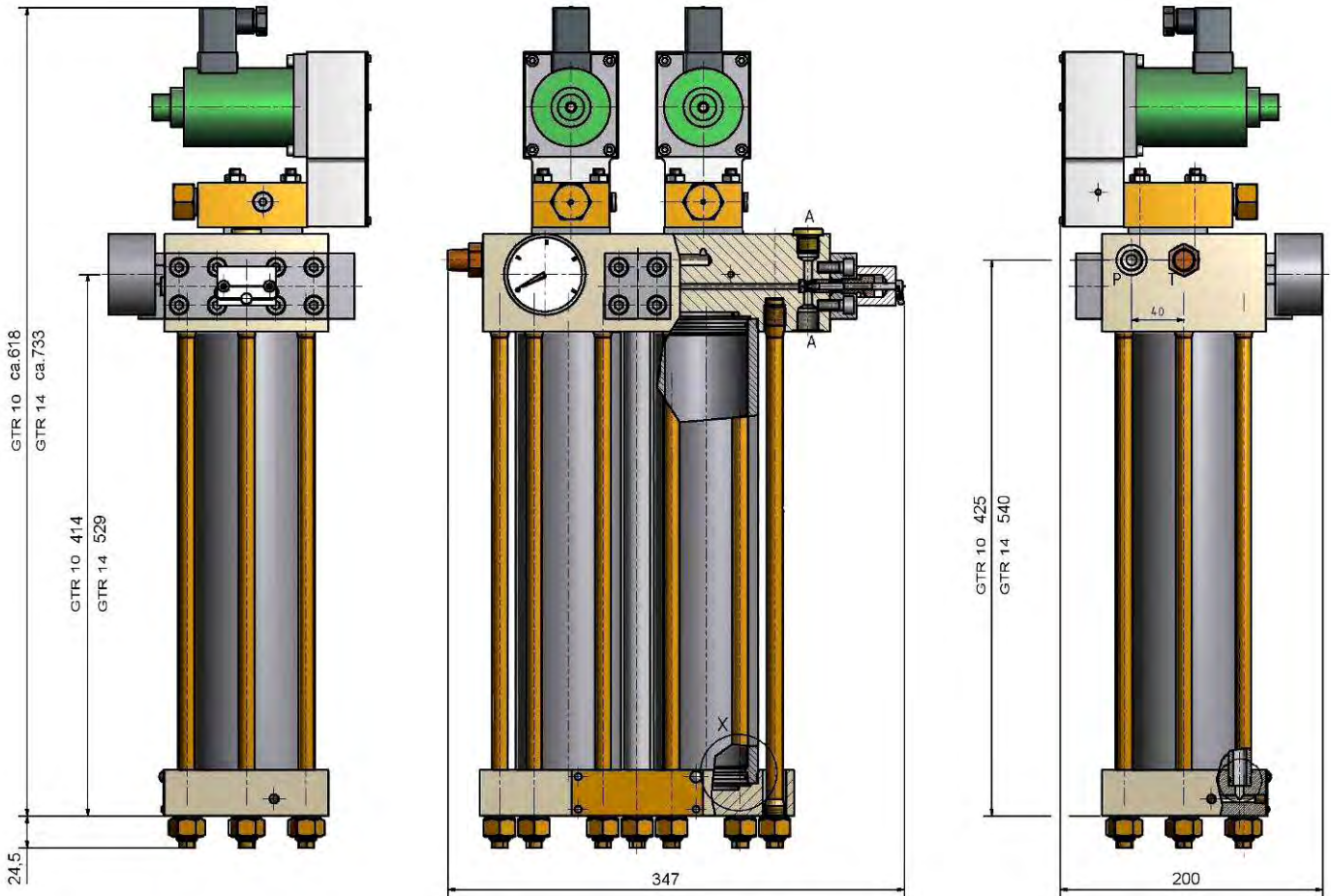
HP 250-350bar

Type

GTR 10 Q max 1000L/min

GTR14 Q max 1400L/min

GAS DRYER STATIONS

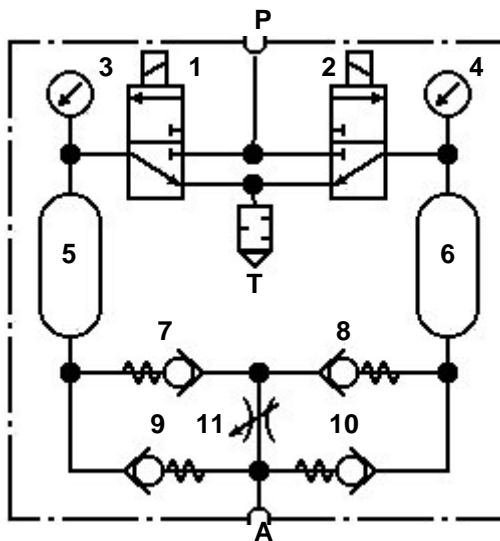


| Technical Data | GTR 10 MD | GTR 10 HD | GTR 14 MD | GTR 14 HD |
|--------------------|--------------------------|------------|----------------------|------------|
| Operating pressure | 30-250bar | 250-350bar | 30-250bar | 250-350bar |
| Flow rate | 1000L/min | | 1400L/min | |
| Regeneration air | 5-10% of inlet flow rate | | | |
| Air volume | 0,7L each reservoir | | 0,99L each reservoir | |
| Max. temperature | 40°C | | | |
| Humidity | 100% | | | |
| Voltage | 24V DC, 240V/50Hz | 24V DC | 24V DC, 240V/50Hz | 24V DC |
| Power consumption | 27W | 31W | 27W | 31W |
| Dew point | -40 bis -60°C | | | |
| Material Covers | SS / MS option | SS | SS / MS option | SS |
| Material tube | Steel nickel coated | | | |
| Main connections | G3/4" | | | |
| Mass | 58Kg | 61,5Kg | 58Kg | 61,5Kg |

GAS DRYER STATIONS

GAS DRYER TYPE GTR

The gas drier consists of two reservoirs filled with highly porous hydrostatic materials (adsorbents), into which damp compressed air and dried depressurized air are alternately admitted for the regeneration phase.



- P High pressure inlet HP
- 1; 2 3/2-directional valve
- 3; 4 Pressure gauge
- 5; 6 Reservoir with adsorbent
- 7; 8 Check valve LP
- 9;10 Check valve HP
- 11 Throttle
- T Vent
- A High pressure outlet

The gas drier consists of two reservoirs filled with highly porous hydrostatic materials (adsorbents), into which damp compressed air and dried depressurized air are alternately admitted for the regeneration phase. The damp air coming from the compressor passes through the fine filter and the energized open 3/2-way valve DN 6 (1), which voltage is being passed, and reaches the reservoir (5).

The adsorbent in reservoir (5) removes the moisture from the damp compressed air as it passes through this reservoir. The now dry air passes via the check valve (9) to out let port /A). A small portion of this dried compressed air is depressurized in the throttle valve (11) and flows through the check valve (8) to the reservoir (6). This dried air adsorbs the water from the damp adsorbents and passes via the 3/2-way valve (2) into the atmosphere, thus regenerating the adsorbents. An dryer system requires an additional fine filter at the inlet and an pressure maintaining unit at the outlet of the dryer (for more details please see page E1.8.4).

The inlet and outlet of the adsorbent reservoirs are each fitted with a sintered metal disk. These disks filter the water and oil particles out of the incoming damp air and any particles of adsorbate material from the outgoing air. Since drying and regeneration are performed in a counter-flow procedure, any residues are removed from the sintered metal disks at each reversal of the direction of flow. After the preset time interval (e.g. 10 minutes), the two 3/2-way valves (1 and 2) are automatically reversed via a timer switch.

The procedure described above is now repeated but with the reservoirs "reversed".

The drying procedure is connected to the operation of the compressor. When the compressor is switched off, both 3/2-way valves (1 and 2) are closed (off position).

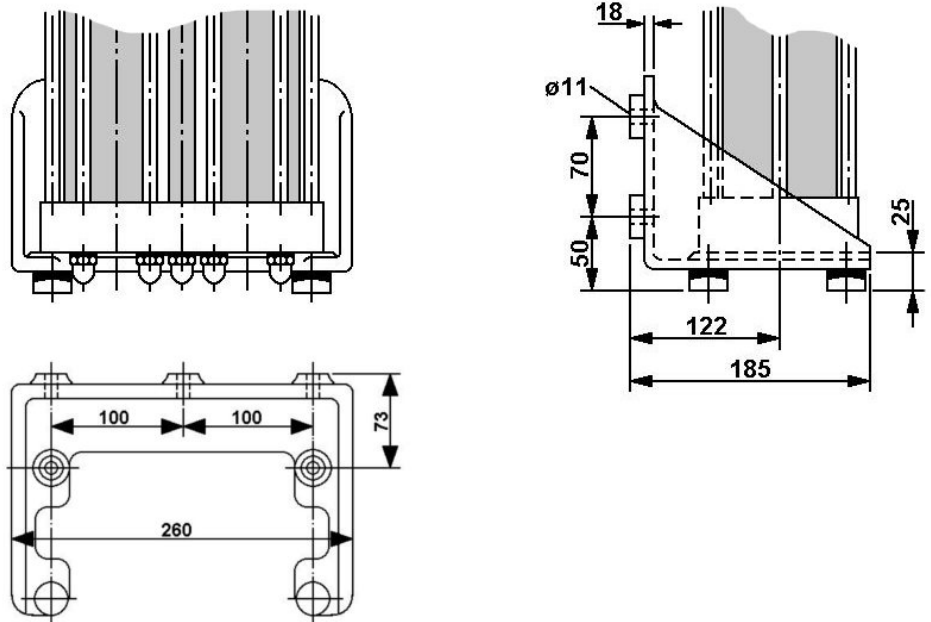
In a complete dryer system the pressure relief valve opens and the condensate in the fine filter is discharged.

When the compressor is restarted, the drying procedure is continued where it was interrupted.

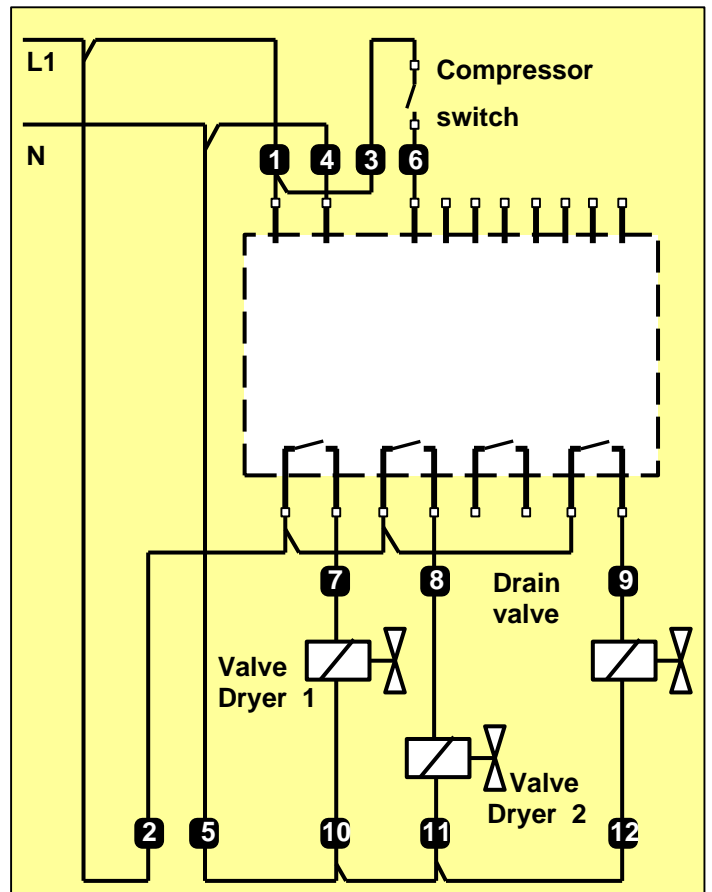
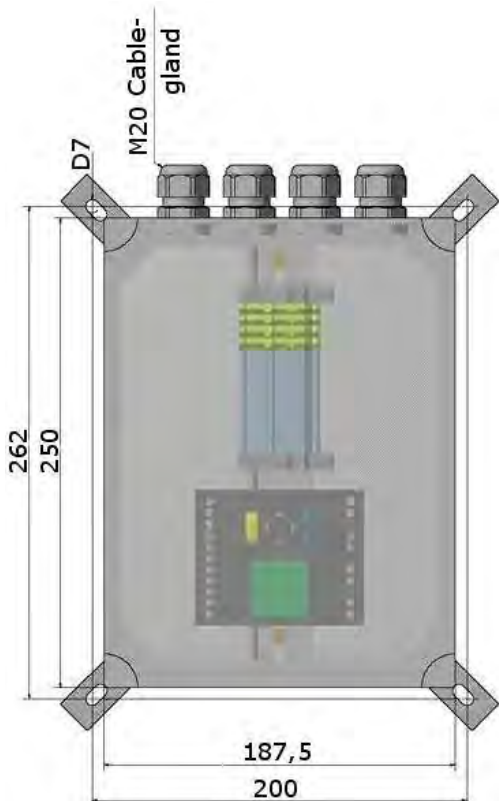
Using this method, extremely low pressure dew points can be achieved (depending on the operating pressure, down to -50°C and lower measured at the drier outlet).

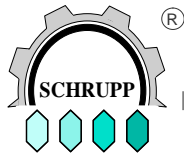
GAS DRYER STATIONS

Ordering information bracket
GTR K 507335



Ordering information control Unit
GTR PS 24GL





www.hl-hydraulik.de

Kupferhütte 5c
D 57562 Herdorf
Tel +49 (0)2744-9324-0
schrupp@hl-hydraulik.de